

Redborne

Upper School &
Community College



A Specialist
Sports College
and
Training School



prospectus

Welcome to Redborne Upper School and Community College.

Redborne has been designated both a Specialist Sports College and a Training School since September 2003.

Successive OFSTED reports have consistently praised the school for the high quality of educational and extra-curricular provision offered. In the most recent OFSTED report Redborne was graded good or outstanding in all 36 categories.

We hope you will find this brochure and the accompanying leaflets informative and helpful. At a time of considerable change in education, we have tried to describe Redborne and give you an impression of what we consider to be the essential features of a good and developing school:

- First rate facilities and equipment.
- Smooth liaison with our feeder schools.
- A curriculum for the future
- **broad, balanced and flexible.**
- Examination success.
- Links with employers.
- Large and successful Sixth Form.
- Care for the individual student.
- Good behaviour and discipline.
- Partnership with parents.
- A wide range of leisure activities.

We cannot describe all aspects of such a large and active school, and we therefore offer a warm invitation for parents to visit us and find out more.



Mr Nigel Croft - Headteacher

Please telephone for an appointment:
(01525) 404462 or fax (01525) 841246
Website: www.redbornecommunitycollege.com
Email: Head@Redborne.beds.sch.uk



INVESTOR IN PEOPLE



Redborne and several Specialist Training in Partnership
16th January 2003



Redborne

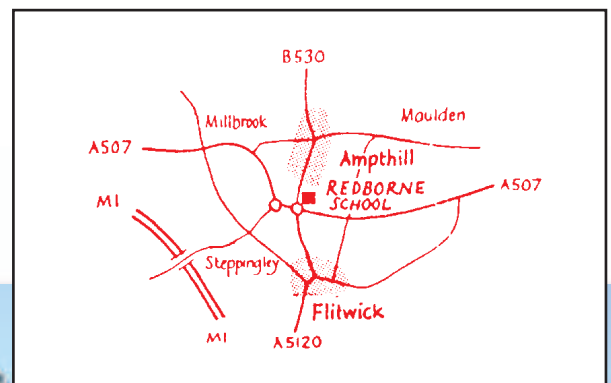
Upper School and Community College
A Specialist Sports College and Training School

Redborne, a 13-18 Upper School since the early 1970s, is ideally placed to provide community education in the area. As an Upper School and Community College, Redborne serves Ampthill, Flitwick, Maulden and neighbouring villages.



The North and South Schools, the two main groups of buildings that make up the school, stand in 40 acres of attractive grounds, with a wide variety of trees, shrubs, flower beds and rock gardens. There are rugby, soccer, hockey and cricket pitches, netball and tennis courts, as well as an athletics track in the summer.

In addition there is a floodlit all weather sports area with an adjoining pavilion. The school also has its own 3 acre farm, used for both livestock and horticultural stock.



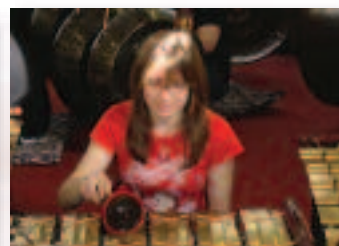
Providing for Our Students

Redborne benefits from a range of first-rate facilities that are available to students from the whole community during the day and in evening classes:

- **Laptops** or **PCs** together with interactive white boards and ceiling-mounted projectors available in every department area
- **Laptops** allocated to all staff
- **E-Learning** centre with classroom observation and video-conferencing facilities
- **Music** centre including Music Technology facilities and a suite of practice rooms
- 13 **Science** Laboratories
- **3 acre farm** with livestock, greenhouses and classrooms



- **Business Studies** Centre
- **Pottery, Art and Design** Studios
- 3 **Drama** Studios
- **Dance** Studio
- Large **Sports** Hall
- **Gymnasium**
- Spacious, well stocked **Library**, and **Resource Centre**
- 5 **Multi-Design** Studios for Design Technology
- 4 **Food** and **Textiles** Technology rooms
- Suites of rooms for **Humanities, English, Maths** and **Modern Foreign Languages**



Learning at Redborne

Our aims are:

- to foster each student's full potential in all areas of school life
- to enable our students to approach adult life with confidence.

We encourage a wide range of teaching methods to enable students to discover and develop their talents.

We maintain good discipline within a supportive atmosphere.

We encourage all students to share responsibility for their own learning, helping them to set realistic targets and achieve success.



Cornwell Business Studies Block



We help our students to:

- develop their ability to think and to make informed decisions
- be adaptable so that they may cope with changes in their future lives and careers
- adopt an open-minded, sensitive attitude towards the ideas and views of other people
- become aware of the need to live harmoniously with the natural environment
- see the value of education as a life-long process.

The Sixth Form

- The Culcheth Centre provides a Common Room for our Sixth Form students.
- It has a large recreation area, a computer room and a private study area. The Head of Sixth Form office is also based in the building.



The Culcheth Sixth Form Centre

Continuity and Progress

Whilst Redborne receives and welcomes students from schools beyond the local community, the majority join us from Woodland and Alameda Middle Schools, where they will have continued the education begun in the six Lower Schools in the locality.

There is close liaison with Woodland and Alameda in all subject areas, and particularly regarding the transfer from Year 8 to Year 9 to ensure that students have a smooth transition to Upper School life.

In this way, we at Redborne continue the high standards of support and learning our students would expect.



YEAR 9 (Ages 13-14)

Students follow a broad curriculum covering all the main areas of experience in readiness for the courses at GCSE. The curriculum is carefully co-ordinated with the work of Years 7 and 8 in Middle School and consists of:

Mathematics	Humanities
Information Technology	Science
Expressive and Performing Arts	Languages
Design Technology	PSHE/Citizenship
Religious Education	

During the second half of Year 9, the curriculum for students in Years 10 and 11 will be decided after full consultation between parents, staff and students.

YEARS 10 and 11 (Ages 14-16)

The National Curriculum provides the basis for the curriculum in Years 10 and 11. All students will study the Core Subjects – English, Mathematics, Science, R.E., PSHE/Citizenship, ICT and P.E. which are supplemented by a number of other subjects to provide a broad and balanced, coherent programme. Students take 9 or 10 subjects at GCSE or can study a mixture of GCSE and vocational courses. An increasing number of vocational courses are available, both school based and in collaboration with Bedford College, in subjects as diverse as Hair and Beauty, Agriculture or Vehicle Maintenance.

SIXTH FORM (Ages 16-18)

The Sixth Form follows naturally all the learning that has gone on before. We strongly encourage all students, whatever their ability, to take one of the many courses available. Our Sixth Form numbers over 400, and about 70% of Year 11 choose to take either a One Year (Vocational) or Two Year course.

- **Vocational Courses:**

A number of BTEC and NVQ courses are available, which prepare students for employment and/or further study at 17 or 18 years of age.

- **Two Year Courses:**

Students will choose three, four or five 'AS/A2' Level or BTEC courses from well over 20 available. These will lead to employment or further study at University or Higher Education at 18 years of age. However, curriculum provision is constantly under review.





EXAMINATION RESULTS

Examination results are impressive at GCSE, A Level and the equivalent vocational subjects offered.

- **GCSE** : On average, each student gains **passes** in over **9 subjects**.
 - : Around **70%** of the year group obtain **5 or more passes** at Grades A*-C. Approximately **10%** of the year group obtain **5 'A*' grades** or more.
- **A Level** : The pass rate is **over 94%**.
 - : The **high grades** obtained by our students has made Redborne one of the **leading academic schools in the County**, beating many fee-paying and selective schools.

Full details of results are given in the leaflets at the end of this brochure.

HIGHER EDUCATION

At least 80% of the Sixth Form continue their studies into Higher Education. Redborne students are to be found in most of the Universities and Colleges in the country. Much time and expertise is devoted to giving up-to-date and relevant advice on courses and entry to Higher Education.



HOMEWORK

Homework is an essential and integral part of all courses. Not only is homework necessary for the proper completion of syllabuses, it enables students to develop the ability to work independently and show initiative.

Homework can take many forms – preparation for or completion of classwork, projects, coursework, collecting data, reading, personal research and written assignments in preparation for examinations.

Students may have a relatively short piece of work set for a particular evening or a longer piece of work to be completed over a period of weeks.

GCSE courses demand a high degree of self-discipline and organisation, both in school and at home. These habits of individual study are developed further in the Sixth Form.

A Homework Timetable is produced for each Year Group and the School provides each student with a Homework Diary. This is used to record work to be done and helps the student to plan and organise time.

We encourage parents to read the Diary and contact the school with any questions that may arise.

Partnership with Employers

Redborne has actively sought to develop and maintain close links with employers, who have offered a range of valuable experiences to all students.

All Year 10 students spend two weeks on Work Experience. Some students who study vocational courses based at Bedford College spend one day a week on work experience and for those students for whom it is deemed appropriate, extended work experience is arranged in co-operation with local employers. Our Sixth Form students have worked on Education Engineering schemes with companies that include Lockheed Martin and Glaxo Wellcome, as well as participating in the Young Enterprise Scheme.

The Design Technology Department enter many competitions organised by local and national firms, with considerable success.



Community College

Redborne has the advantage of being part of a large and flourishing Community College, one of the largest in the County. Classes for adults are held during the day and evening. There are about 3000 students who enrol on different courses each year.

Supporting Our Students

PASTORAL CARE

On arrival at Redborne, students join a Form Group, which will be theirs for Years 9, 10 and 11. Each Form Group numbers approximately 25 students (selected initially after liaison with Middle School teachers) with a Form Tutor who remains with the Group for three years.

Forms meet for a total of 20 minutes on each of four days, and all Forms meet together on the fifth in the Year Assembly which is taken by the Head of Year, other senior staff or a visiting speaker.

Students joining the Sixth Form will be in different Form Groups with a new Form Tutor. In this way, they will have the opportunity to meet a number of other people.

We attach a great deal of importance to Form Tutors:

- they form a close relationship with the student during their time together to become someone whom the student trusts and approaches for advice;
- they oversee academic and social development;
- in addition to regular Form activities, they meet each student individually to discuss progress and set targets for the future;
- they meet parents to discuss students' welfare and progress;
- they oversee progress checks and reports for parents.

Heads of Year work closely with Form Tutors and supervise the academic progress and general welfare of all students in the year group.

SCHOOL STUDENT/PARENT AGREEMENT

Each student is issued with an agreement that is signed by the school, parents, and students. This agreement states that the school will undertake to provide the highest standards of academic, moral and social education.

Students are asked to strive to produce work on time and achieve the highest standard of which they are capable. Parents are asked to support and encourage students and staff in their efforts to maintain high standards of work and discipline.



SPECIAL NEEDS

We identify students who, on arriving at Redborne, have special educational needs, those who find learning difficult or have particular problems or aptitudes.

Our policy offers support for such students within the lesson or tuition on an individual or small group basis and we review such provision regularly to ensure that those who require help receive it. We employ a team of Learning Support Assistants to help individuals and groups of students.

DISCIPLINE

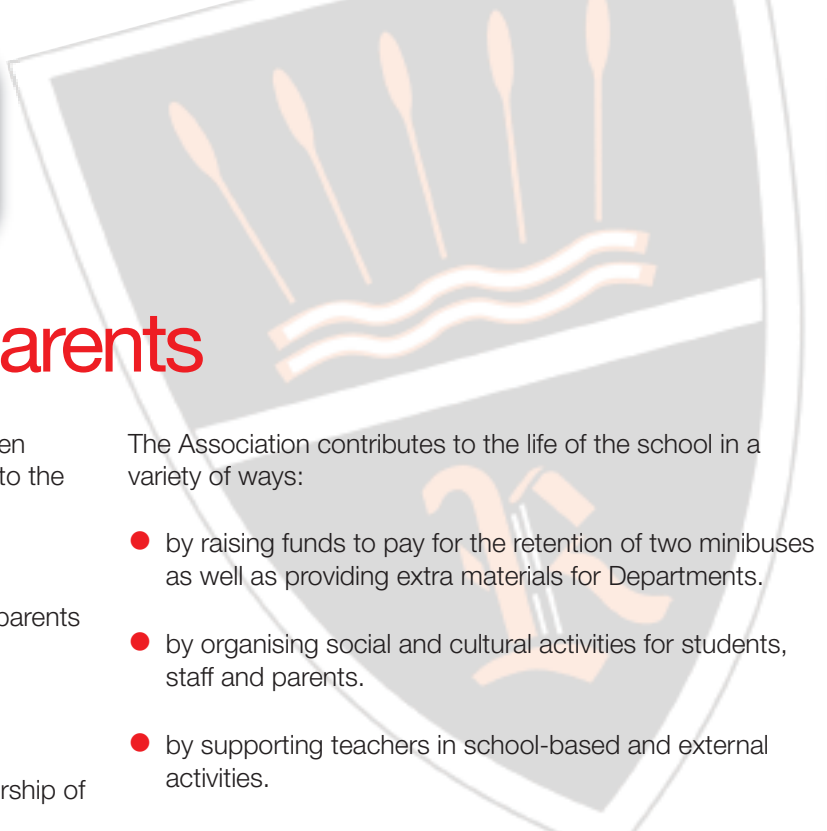
Behaviour in the school is excellent, with a harmonious and pleasant atmosphere in class and around the school at break and lunchtimes.

“Students are well behaved, attentive and exceptionally well-motivated”.

(Ofsted 2005)

Redborne is orderly and well-disciplined. The atmosphere, quickly recognised by newcomers to the school, is one that combines well-ordered routines of work and movement with friendly and sympathetic attitudes. We emphasise the solid and traditional virtues of hard work, good behaviour and politeness.

Reasonable sanctions are used, when required, to back up our standards of discipline.



Partnership with Parents

We regard a constructive and helpful dialogue between parents and school as very important in contributing to the effectiveness of our students' education.

Through monitoring, reports and Parents' Evenings, parents are closely involved and well informed of progress or problems.

The Redborne Association is the focus for the partnership of parents, teachers and students.

The Association contributes to the life of the school in a variety of ways:

- by raising funds to pay for the retention of two minibuses as well as providing extra materials for Departments.
- by organising social and cultural activities for students, staff and parents.
- by supporting teachers in school-based and external activities.
- by arranging evenings on educational issues for parents.

The Redborne Association continues to grow; all parents are warmly invited to join the Association and to attend any of its functions.



The Wider Curriculum

We encourage students to take part in activities outside the normal school curriculum. A variety of clubs and societies are organised during the lunch hour, after school and on other occasions. These activities are not only enjoyable in themselves, but encourage commitment, self-reliance and co-operation, all qualities valued by employers and in society generally.

Redborne has maintained strong traditions in Sport, Dance, Drama and Music, all of which involve large numbers of students. Some have continued to develop expertise in activities already familiar, whilst others have responded to new challenges.



SPORT

We offer students the opportunity to take part in a variety of sports and actively support them, whether they are interested in sport as a recreational activity or wish to pursue their interest at a more competitive level.

The school provides players for county teams and regularly has two or three students who have reached national level. The main sports are:

RUGBY	HOCKEY	CRICKET
TENNIS	BASKET BALL	SOCCER
NETBALL	ATHLETICS	VOLLEYBALL
BADMINTON	CROSS COUNTRY	FENCING
ARCHERY	SWIMMING	



DRAMA

Redborne has a fully equipped theatre, in the Main Hall, with excellent stage and lighting facilities, and three Drama Studios where students can explore different uses and techniques in lighting within a carpeted space ideally suited for all forms of drama.

These facilities are used by the Local Operatic and Dramatic Society and we regularly invite touring groups to perform.

Theatre trips are a regular feature of the department with visits to London, Birmingham and Warwick theatres to see performances as diverse as Equus, Chicago, Faust or The Caucasian Chalk Circle.

The school has a well-deserved reputation for the quality of its productions. Recent productions for the annual drama festival have included The Government Inspector, Antigone, Blue Remembered Hills, The Rivals and Amadeus.

DANCE

Redborne has a fully equipped Dance Studio including mirrors, a sound system and lighting facilities. The department has a well-deserved reputation for its annual dance shows, displaying extra curricular activity work which takes place most evenings after school, in the Autumn term. An annual composition evening is also a regular feature of the department.

Students get the opportunity to perform at the Bowen West Theatre in Bedford and take part in workshops at the University of Bedfordshire.



MUSIC

Music is an equally important feature of school life, within and beyond the taught curriculum. Courses up to 'AS' and 'A' Level are offered and, in addition, many students benefit from the County's visiting music staff, who give tuition in a wide range of musical instruments.

There is a school choir, orchestra, concert band, string group, jazz group and various ensembles which are regularly called upon to give public performances.

A large number of students are members of County Orchestras and Bands who have a respected reputation nationally.

A recently installed computer suite has enabled the development of Music Technology up to 'AS' and 'A' Level.



Students have the opportunity to develop hobbies and interests, take part in community service, and meet the challenge of camping and expeditions. They develop initiative, perseverance and powers of organisation.



DUKE OF EDINBURGH AWARD SCHEME

This has long been a successful aspect of our extra-curricular activities and over 300 students regularly take part. Many staff, ex-students and members of the local community help run the scheme at Bronze, Silver and Gold level.



Foreign Exchange and Visits

Students at Redborne are able to take part in a number of visits abroad. There are exchanges with schools in France, Spain and Germany and cultural visits to places as diverse as Morocco, Germany and Iceland. Skiing and other activity holidays are organised annually.



Charity Work

A major feature of life at Redborne is our commitment to raising money for national and local charities.

Each year several thousand pounds are raised through a huge range of activities. The money supports numerous charities decided by Year Councils or the School Council on a yearly basis.

In recent years we have committed to helping students at a school in Kenya, supported national campaigns including MacMillan Cancer Care and Great Ormond Street Hospital and provided Christmas parcels for local care homes for the elderly.



Redborne

Upper School and Community College
A Specialist Sports College and Training School





Redborne Upper School and Community College

Flitwick Road
Amphill
Bedfordshire MK45 2NU
Tel: 01525 404462
Fax: 01525 841246
e-mail: Head@Redborne.beds.sch.uk
Website: www.redbornecommunitycollege.com