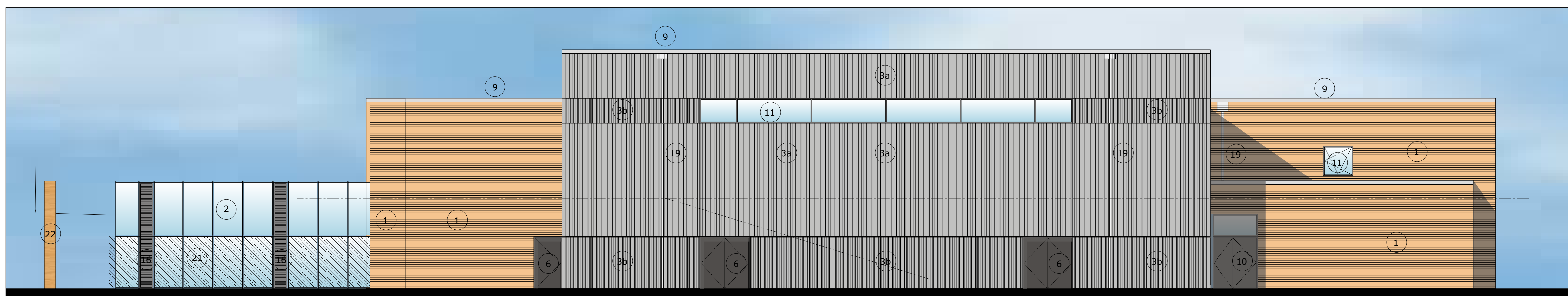




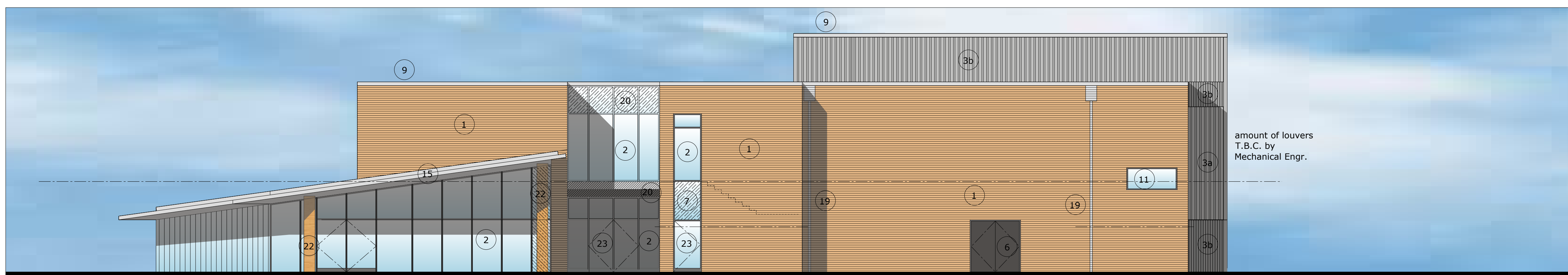
WEST ELEVATION SCALE = 1: 100 @ A1



NORTH ELEVATION SCALE = 1: 100 @ A1



EAST ELEVATION SCALE = 1: 100 @ A1



SOUTH ELEVATION SCALE = 1: 100 @ A1

- KEY:**
- 1 Facing brick - colour to be confirmed
 - 2 Facing brick (recessed) - colour as 1
 - 2 PPC aluminium double glazed curtain walling
 - 3a Steel cladding coated in Colorcoat Prisma solid metallic - colour T.B.C. Profile = CA Arc 50 930 or similar approved.
 - 3b Steel cladding coated in Colorcoat Prisma solid metallic - colour T.B.C. Profile = CA Sinu 19 988 or similar approved.
 - 4 PPC aluminium standing seam roof
 - 5 PPC aluminium canopy
 - 6 Steel fire exit door
 - 7 Glazed spandrel panel
 - 8 PPC aluminium louvers
 - 9 PPC aluminium coping
 - 10 Steel fire exit door with overhead glazing
 - 11 PPC double glazed window
 - 15 PPC aluminium flashing, banding, panel
 - 16 PPC aluminium louver with insulated door. Acoustic rating to be confirmed by the Acoustician. Exact numbers to be confirmed by the Mechanical Engineer.
 - 19 PPC aluminium RWDPs
 - 20 PPC aluminium spandrel panel
 - 22 Timber columns to support roof
 - 23 PPC aluminium double glazed door
 - 24 Lead flashing