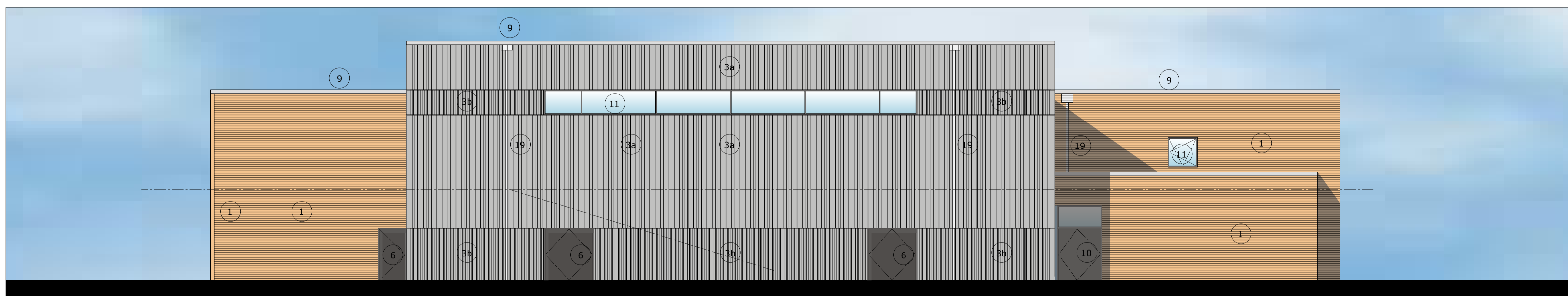


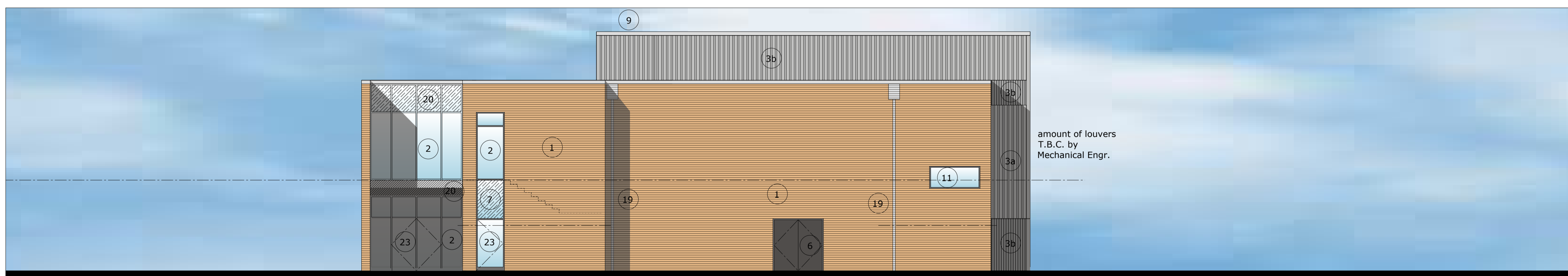
WEST ELEVATION SCALE = 1: 100 @ A1



NORTH ELEVATION SCALE = 1: 100 @ A1



EAST ELEVATION SCALE = 1: 100 @ A1



SOUTH ELEVATION SCALE = 1: 100 @ A1

- KEY:
- 1 Facing brick - colour to be confirmed
  - Facing brick (recessed) - colour as 1
  - 2 PPC aluminium double glazed curtain walling
  - 3a Steel cladding coated in Colorcoat Prisma solid metallic - colour T.B.C. Profile = CA Arc 50 930 or similar approved.
  - 3b Steel cladding coated in Colorcoat Prisma solid metallic - colour T.B.C. Profile = CA Sinu 19 988 or similar approved.
  - 4 PPC aluminium standing seam roof
  - 5 PPC aluminium canopy
  - 6 Steel fire exit door
  - 7 Glazed spandrel panel
  - 8 PPC aluminium louvers
  - 9 PPC aluminium coping
  - 10 Steel fire exit door with overhead glazing
  - 11 PPC double glazed window
  - 15 PPC aluminium flashing, banding, panel
  - 16 PPC aluminium louver with insulated door. Acoustic rating to be confirmed by the Acoustician. Exact numbers to be confirmed by the Mechanical Engineer.
  - 19 PPC aluminium RWDPs
  - 20 PPC aluminium spandrel panel
  - 22 Timber columns to support roof
  - 23 PPC aluminium double glazed door
  - 24 Lead flashing