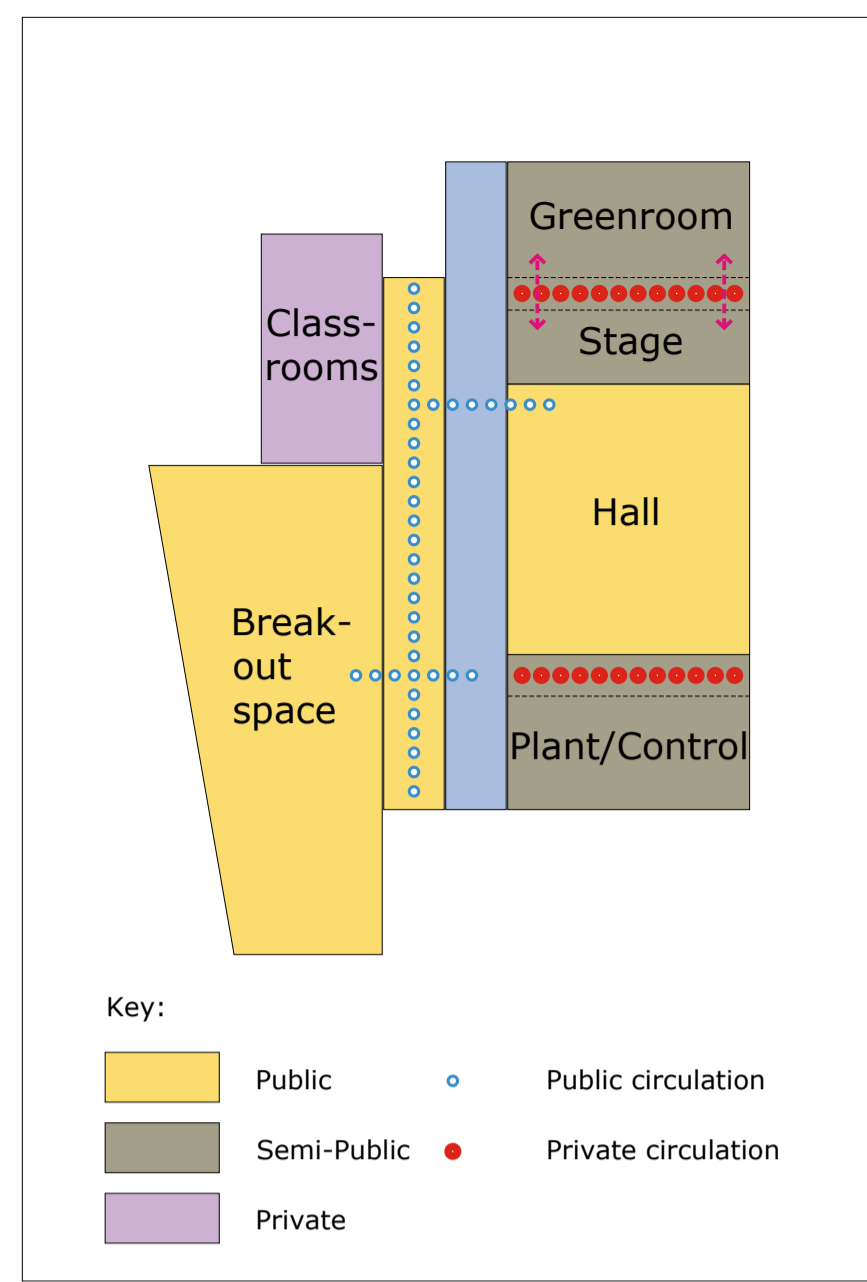
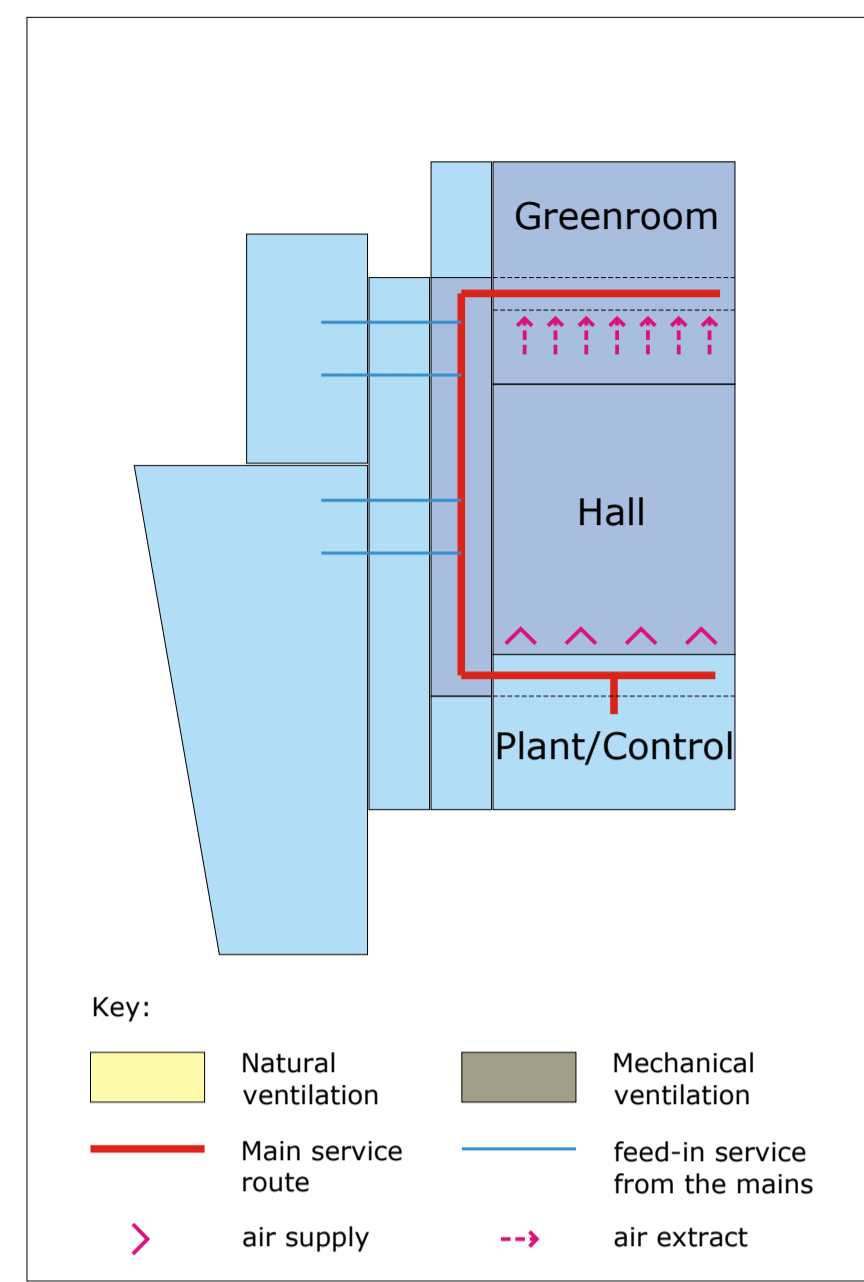


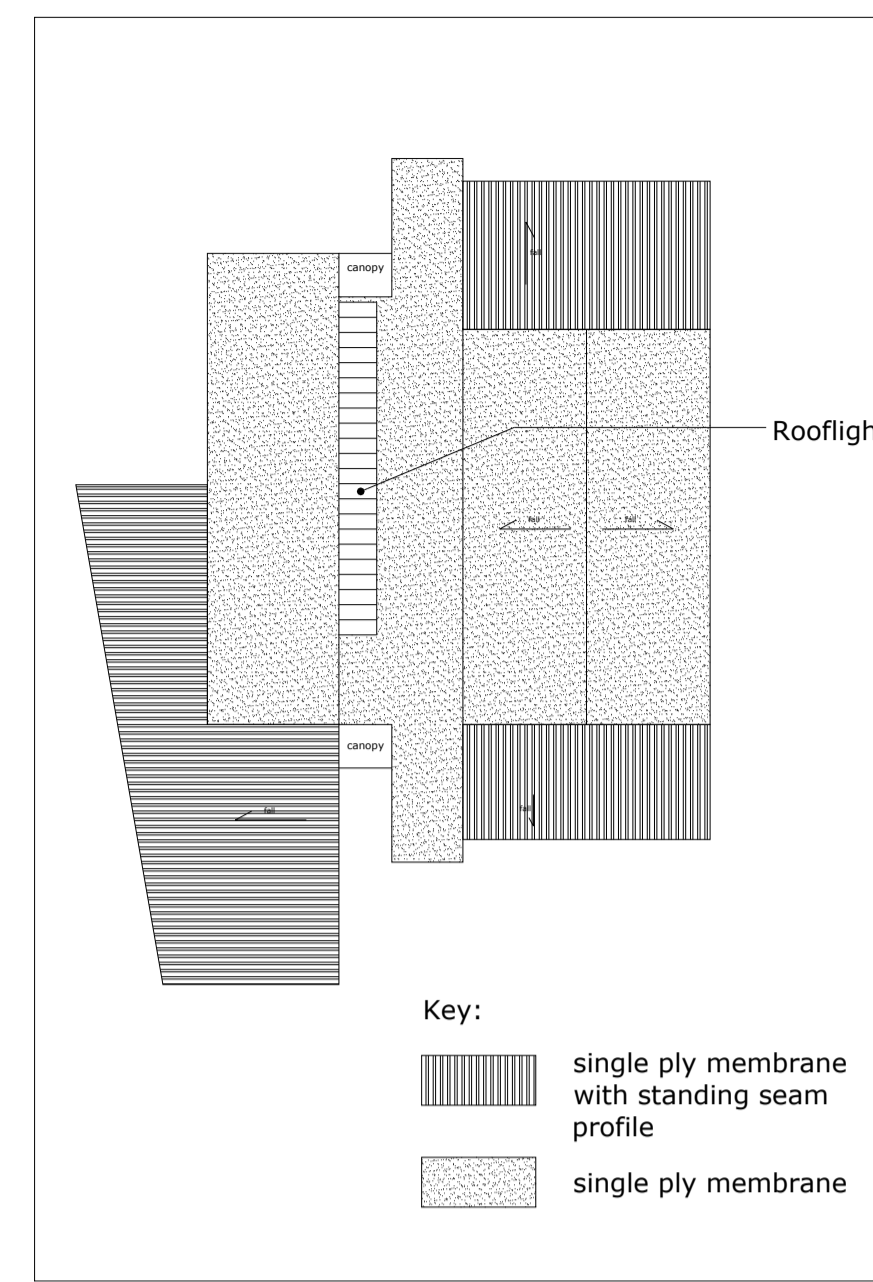
Spatial diagram



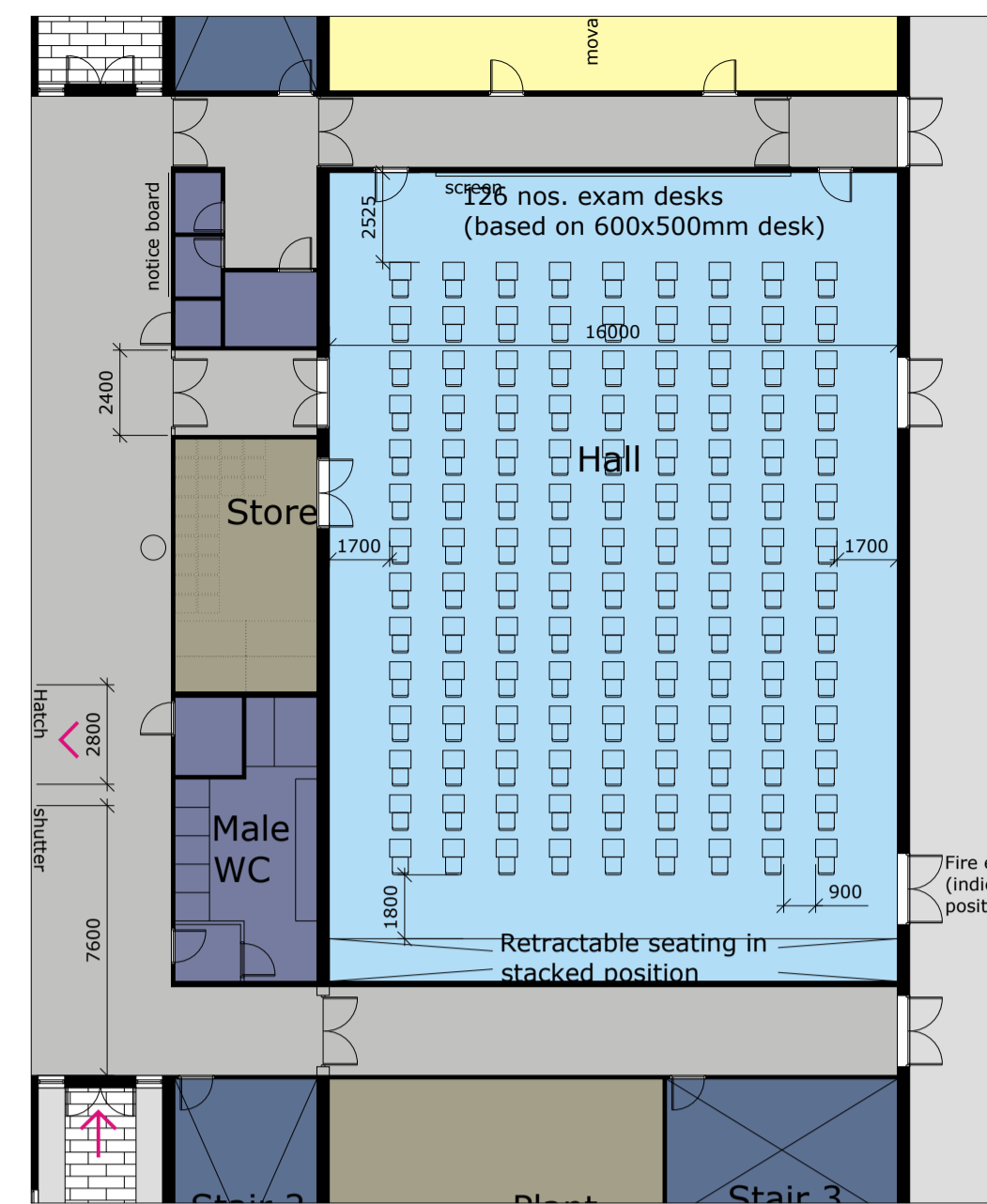
Circulation diagram



Services strategy



Roof Plan
SCALE = 1: 500 @ A1



PLAN showing hall being used for exam
SCALE = 1: 200 @ A1

Sanitaryware accommodation on GF
Total classrooms = 2
Total students = 2 x 30 = 60

Gender	Number of sanitaryware currently provided			Pupils number which the sanitaryware is capable to meet, in accordance to Table 6 of BS 6465-1:2006
	WCs	Urinals	WHB	
Male	1	2	2	60
Female	3	-	2	60

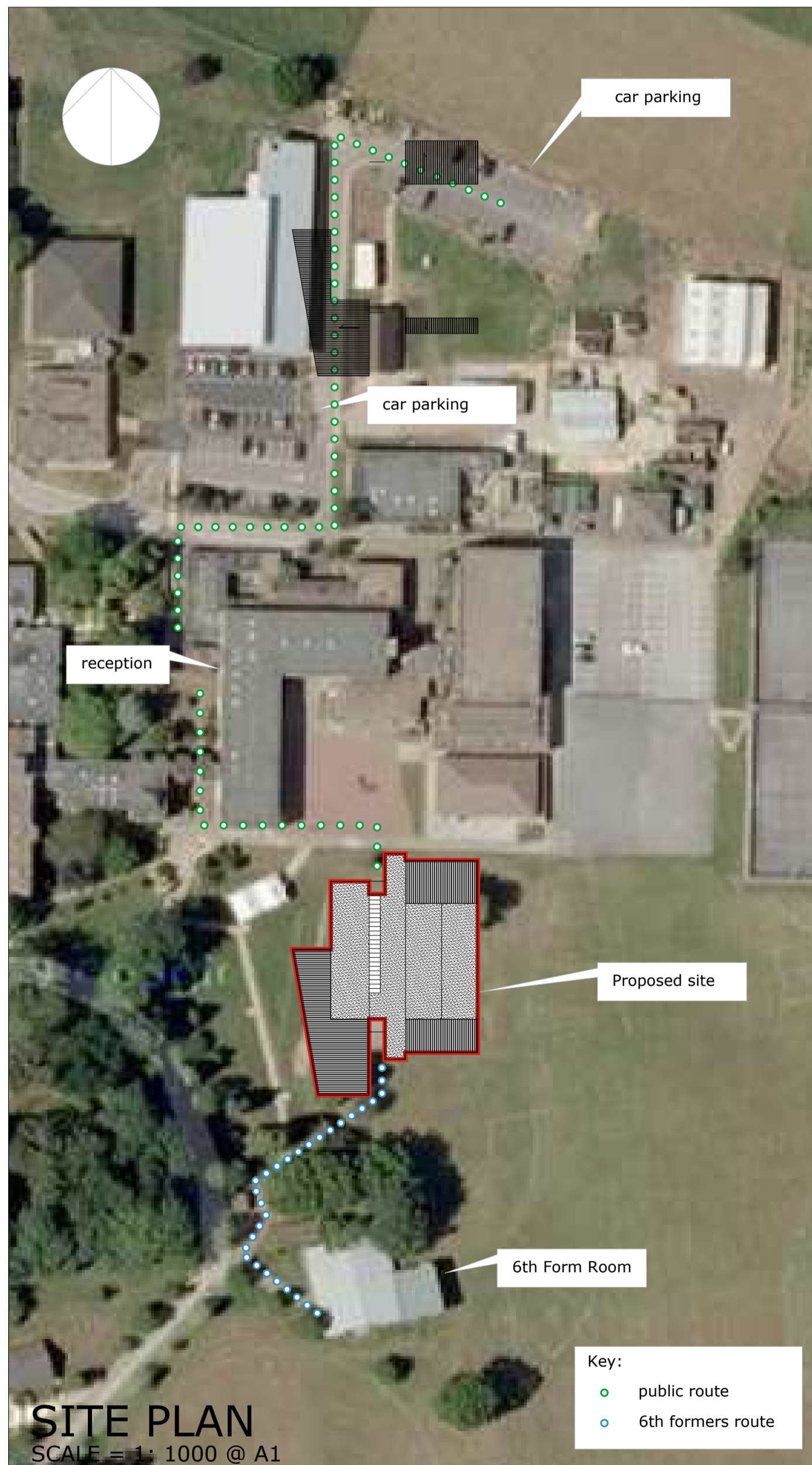
Additional sanitaryware accommodation:

Gender	Number of sanitaryware currently provided			Pupils number which the sanitaryware is capable to meet, in accordance to Table 6 of BS 6465-1:2006
	WCs	Urinals	WHB	
Male	1	3	4	80
Female	5	-	4	100
TOTAL ON GF				300

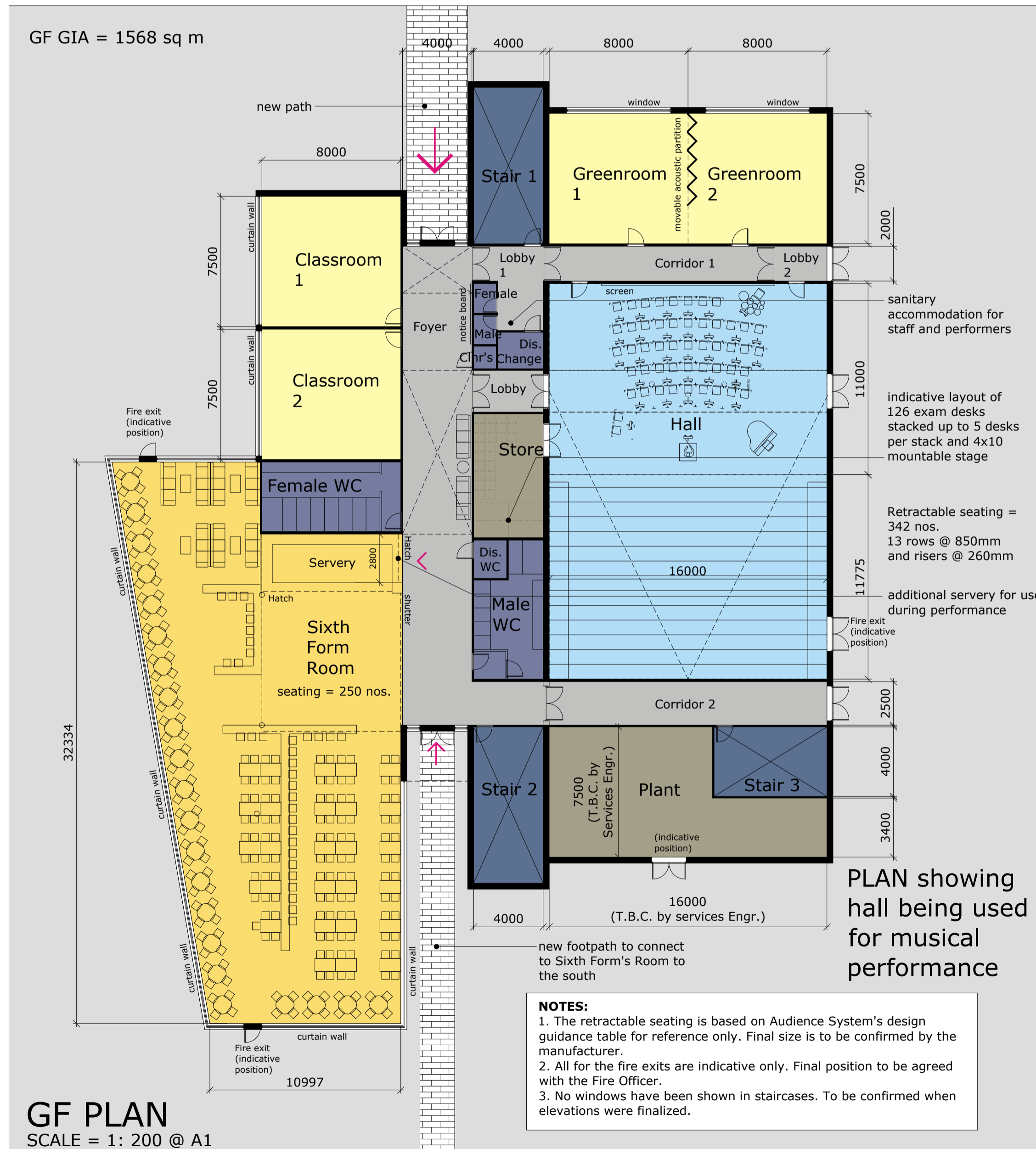
Sanitaryware accommodation on FF

Total classrooms = 4
Total students = 4 x 30 = 120

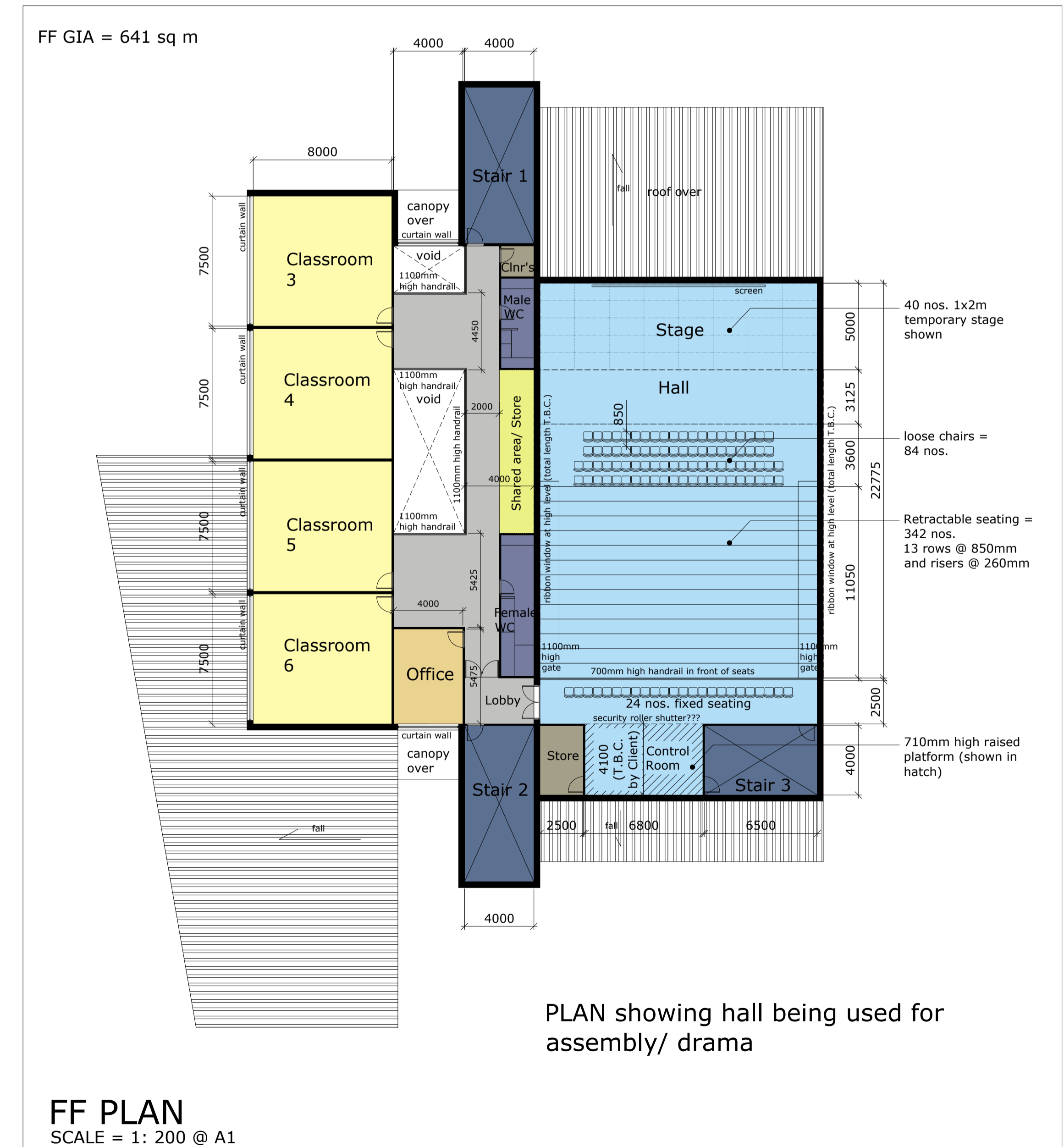
Gender	Number of sanitaryware currently provided			Pupils number which the sanitaryware is capable to meet, in accordance to Table 6 of BS 6465-1:2006
	WCs	Urinals	WHB	
Male	3	3	4	120
Female	6	-	4	120
TOTAL ON FF				240



SITE PLAN
SCALE = 1: 1000 @ A1



GF PLAN
SCALE = 1: 200 @ A1



FF PLAN
SCALE = 1: 200 @ A1