

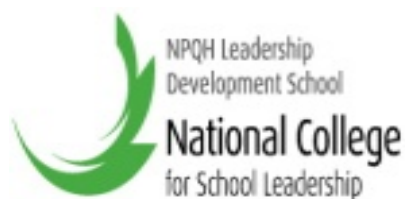
Redborne Enrichment Booklet 2015-16



*A guide for students and parents
of our extra-curricular activities*



Academic Excellence Shared Values Outstanding Education



CONTENTS

	<u>Page</u>
Introduction	3
Welcome from Heads of Year Teams	4
School Council	6
Head Boy and Girl	7
Redborne Sports Partnership	8
Pupil Premium	9
Redborne House System	10
Redborne House Winners 2014/15	11
School Farm	12
Careers Guidance	13
Redborne Library	13
School Shop	14
Connecting Classrooms - South Africa	15
Student/Parent Booklets 2015/16	16
Proposed Educational Visits 2015/16	17
A flavour of Redborne's involvement in the local community	20
Redborne Enrichment Summary	21
Physical Education Autumn Term Extra Curricular Activities	25
Duke of Edinburgh's Award Scheme	26
School Musical – Les Miserables	27
Extra-Curricular Clubs/Activities	28

Introduction



Welcome to all as we start a new academic year.

Students at Redborne are part of a school with an excellent reputation both in educational circles and within the community. This reputation has been established because of our high academic achievements. Year on year the majority of our students outperform their indicator grades and gain qualifications that allow them to access suitable future pathways.

However, this is not the only reason that we believe we deserve our Outstanding Ofsted status; our extra-curricular activities are extensive and wide ranging. Our wish is that every student takes part in some additional aspect of school life during their time at Redborne; this could, for example, be supporting the school farm or helping one of our feeder schools in a sporting activity.

This booklet is designed to help students make informed decisions about the activities they may wish to join. Each activity in the booklet is accompanied by a short explanation and contact details of the person responsible.

Additional activities will be on-going throughout the year, either as one off events or new clubs that start up due to a particular demand; please check the website for updates. We advise that students check details to ensure that the information contained in this booklet is accurate.

We look forward to students taking part in many of the exciting opportunities we offer at Redborne.

Mrs D Buthee
Deputy Headteacher

Welcome

A short message from each Head of at Redborne...



Year 9 can be a scary prospect - most of you will have come from a school where you were the oldest to now being the youngest. Redborne will be significantly bigger than your middle school but this means that we can offer you a huge number of extra-curricular opportunities and it's really important that you make the most of these chances.

As I mentioned when I first met you, we really want you to take up every opportunity and enjoy yourselves! We can also offer you the chance to study a whole range of different subjects and after just a few months you will take the biggest step in your education so far when you choose your GCSE options.

There will be times along the way when you are unsure how to deal with situations and you may face challenges which we will help you to overcome. The 500 days that you spend with us before the end of Year 11 are vital in shaping your future and Year 9 is the first step on the way. We all want to help each and every one of you to unlock your potential.

Mrs S King
Head of Year 9

Year 10 is undoubtedly a crucial year in your education as you are working towards your final exams in the summer of 2017. It is also an opportunity for you to grow as a student by embracing opportunities outside of the classroom. For some of you this will be a chance to take on a part-time job (and do come and talk to us if you need help and advice) and for others you will expand your horizons by getting involved in a club or society.



As the job market becomes increasingly competitive you will be judged by your exam results, but also by those extra special qualities which you can only develop by getting stuck in. We want you to get some fantastic grades but we're also very keen to turn out good people.

Mr R Woodward
Head of Year 10

Welcome

A short message from each Head of Year at Redborne...



Welcome to Year 11. As you embark on this crucial year of your studies, it would be easy to say that you don't have time for anything else. I know you will all be keen to spend every waking moment revising. But that is not realistic. As I have mentioned on numerous occasions you will need more than good grades to get noticed in the world beyond Redborne. The other elements of your CV could be the difference between you and another candidate.

This booklet contains every possible extra-curricular activity with which you could get involved. It is these things that make us who we are and keep us sane in an environment of such pressure. I hope you will find something within this booklet to occupy your free time. Who knows... You may even find something you'll love doing for the rest of your life.

Mr J Trapp
Head of Year 11

Welcome to the Sixth Form at Redborne. As you embark on your AS or A2 levels, you will dedicate yourself to 3 or 4 subjects which will, hopefully, at a later stage lead to university, employment or an apprenticeship. It is important to balance academic study with other activities and in this booklet, we are offering a range of enrichment activities that you might like to get involved in. Something different from A levels but also something which might make the difference between you and another candidate on a shortlist for that crucial job or university place. Not only that, being involved in an enrichment activity, such as volunteering or supporting others around the school, is rich and rewarding in itself.



At Redborne, we want every Sixth Form student to be doing some form of enrichment activity, and this is meant in the widest sense of the term. It may not be based at school, it could be as a young leader in Guides or Scouts, playing for a local football team, volunteering at a local hospice or being a member of an amateur dramatic group.

Early in September, your form tutor will want to know what it is you are doing other than academic study, part-time employment and socialising with friends - so be prepared to get involved in at least one activity in this booklet or discuss with them what else it is that you do to be that more 'rounded' and experienced person a university or employer might want.

Mr A French
Head of Sixth Form

School Council

Each year has a year team council with representatives from each form. These councils meet to discuss issues raised within the year group, organise social events and plan the charity week that is associated with that year. The year councils are supervised by a member of the year team, usually an assistant head of year.

The school council considers issues of importance to the whole school and has two representatives from each year group. Elections to the school council take place in the first half of the autumn term and the students vote for one boy and one girl to represent them. Meetings take place weekly at lunchtimes on a day that suits the council best, and are chaired by the head boy and head girl, with Mr Gray and Ms Brennan in attendance to represent the staff. The council may consider matters that have been referred up from the year councils, and it acts as the student voice when considering changes in policy - in recent years the council has had a significant input into the revisions to the extended learning policy and the effort grade system. Council members are often called upon to represent the school when meeting external visitors. The council representatives from Year 12 also serve as deputy head boy and head girl.

The head boy and head girl are elected in March, and take up their posts at the end of May when the Year 13 leave. Elections take place on the basis of one person, one vote across the school, with all students and members of staff having the right to vote. The head boy and head girl are responsible for organising the school council, speaking to the student body in assemblies, and representing the students to the governing body and on occasions such as parents evenings.



Mr S Gray
Head of School

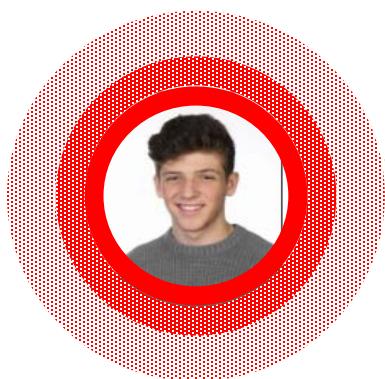


Ms N Brennan
Assistant Headteacher

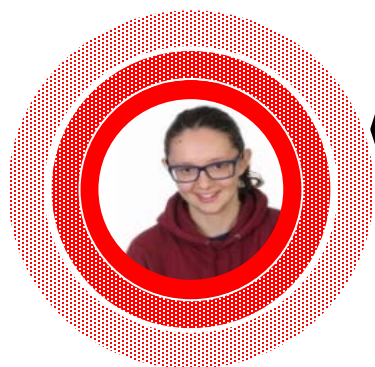
Head Boy and Girl

Each year Redborne hold elections to elect a Head Boy and Head Girl, they are seen as role models to all of our students and it is a role which carries great prestige and respect.

Our Head Boy is Jack Chiappe and our Head Girl is Madelaine Baker.



"Having studied at Redborne for over 4 years, I can tell you with utmost certainty that it is an environment you will want to be in. There's an atmosphere at the school that makes it hard to replicate anywhere else. An atmosphere that creates happy but hardworking students, with some of the best results in the country. The teachers are a very important component to making the school the place it is, and with their consistent effort, not only to teach us, but allow us to grow as people, we can only thank them. The wide range of extra-curricular activities offered by the school allows the reward system to be accessed by all students. It's a near impossible task to find fault with the school, and I hope your experience will have you reach the same conclusion."



"Having joined Redborne in Year 10 after having been overseas for several years, I was unsure of what the dynamic of the school would be like and how easy it would be for me to slot into place here. Anyone joining Redborne will quickly see, without a doubt, that this is a unique place where both students and teachers work together to progress and achieve the best possible results from the 5 years spent at this school. The teachers play a big part in making Redborne the success it is today. They are 100% dedicated and are always willing to offer their time to provide extra support/help when certain topics or subjects are proving a challenge. There is a huge choice of extra-curricular activities provided by the staff which further shows their clear devotion to the school as they choose to spend their own time after the school day, to help and teach us further. It is clear to see that the teachers here at Redborne all have a strong passion for wanting to help everyone to grow into, not just mature adults, but also well rounded people who go out into the world with a sense of respect and value for others."

Redborne School Sport Partnership

Redborne School Sport Partnership delivers an outreach programme to 53 schools across Central Bedfordshire. The focus of our work is to increase the quality and quantity of PE and school sport. Across the year we deliver sporting events to thousands of young people, deliver leadership programmes to hundreds of pupils and provide invaluable training to non PE specialists.

Schools invest in the programme on an annual basis and we also work closely with community clubs, national governing bodies of sport, charities and other national sporting organisations. At Redborne, our flagship programme is our Leadership Academy. Specifically for Year 9 students, we register around 70 students per year who help us with our programmes, they gain invaluable leadership, communication skills and self confidence. These students have access to accredited courses to expand their CV and we encourage all to take part in community volunteering. Through their journey we reward them at specific milestones in recognition of their hard work and commitment.

For more information please log on to www.redbornessp.com

James Stephenson
School Games Organiser
Tel: 01525 842604
Mobile: 07974 438802
Visit us at www.redbornessp.com
Follow us on www.twitter.com/redbornessp



Pupil Premium

What is Pupil Premium?

Pupil Premium is funding from the government which is allocated to every school in addition to their main school funding. Schools are awarded funding for every student on their roll who:

- is currently eligible for free school meals or has claimed free school meals in the last 6 years.



Funding is also available to schools for any student currently in Local Authority Care or:

- who was adopted from care in England;
- who left care under a Special Guardianship Order;
- who left care under a Residential Order.

In addition, schools receive a £300 Service Premium for each student who has a parent currently serving in the armed forces.

How may the Pupil Premium be used?

Schools are free to spend the Pupil Premium as they see fit. There is no requirement for the Pupil Premium to be spent on individual students simply because they fall into this category. However, it is expected that the funding will be used to support eligible students, to enable them to make the same progress as their peers and participate fully in school life.

How do I know if my child is eligible for free school meals?

The qualifying benefits to receive free school meals are:

- Income Support
- Income-based Jobseeker's Allowance
- Income-related Employment and Support Allowance
- Support under Part IV of the Immigration and Asylum Act 1999
- the Guarantee element of State Pension Credit
- Child Tax Credit (provided you are not also entitled to Working Tax Credit, and your annual gross income does not exceed £16,190 as assessed by Her Majesty's Revenue and Customs)
- Working Tax Credit run-on (paid for 4 weeks after you stop qualifying for Working Tax Credit)
- Universal Credit (during the initial roll-out of this benefit)

If you think you meet the free school meals eligibility criteria, please call Central Bedfordshire council on **0300 300 8306**. When you call to apply for free school meals, please have the following information ready:

- National Insurance numbers and dates of birth for you and your partner
- Dates of birth for your children

If you receive support from the National Asylum Support Service, your NASS number
For more information please contact Mrs Cook (Assistant Headteacher with responsibility for Pupil Premium) at the school on stmcook@redborne.beds.sch.uk

Redborne House System

Redborne School has a House System, which runs across all Years and all students and staff are allocated to a House.

The Houses are named after former students, who have represented their country at a sporting event.

Paul Bavister - English Swimmer
Ros Gonse - Great British Athlete
Adam Kempton - Great British Gymnast
Angharrad Phillips - Welsh Rugby International
Louise Sheridan - England Netball
Liz Talbot - Great British Athlete

The House system is undergoing a redesign so that it fully celebrates all that we offer students at Redborne. House points are awarded across the school by all staff and for a variety of reasons. The table below demonstrates how House points may be awarded by staff to our students.

Categories of House Points at present
Club – attending any club gains one point per session attended. This includes any extra-curricular activity in school; sports clubs, training, rehearsals, music clubs etc.
Excellent effort – gains one point for perseverance at a skill, task or technique.
School Representation – gains one point for being selected for a sporting fixture, music performance, drama performance, Redborne Racing etc.
Outstanding work – gains one point for producing an assessed piece of work which exceeds their indicator.
Other –all below gain one point : Teacher discretion – e.g. pastoral point to be used by year teams, academic for peer assistance.

These House points are combined with a points score from each student's progress check data throughout the year. This figure is added to by House events such as House Games in PE to produce a winning House at the end of the academic year. The winning House makes a sizable donation to one of the charities supported in the year by the school. There are also two House prizes for each year group, given to the girl and boy who have gained the most House points over the year. This booklet can be found on the school website, in the student section, in the grey boxes on the left of the page. There are also updates of points and standings of Houses in the House section.



Mr A Jones
House System & SMSC Co-ordinator

Redborne House Winners 2014/15

This past year saw the first ever House prizes awarded to students at Redborne. The winning House was Phillips and a donation of £250.00 was made by the school to Teenage Cancer Trust in their name. The list of year group winners can be seen below; each one received an amazon voucher worth £25.00. Well done!

Year 9



Molly Healy



Charlie Galvin

Year 10



William Simpson



Isabella Goode

Year 11



Megan Gordon



Arthur Manley

Year 12



Ben Bradley



Charlotte Rawlings

Year 13



Erin Barnard



Sam Broadhouse

School Farm

The farm shop is located near the farm classroom and along with the farm is open to any visitors each Saturday 9am - 12pm. Visitors can wander round and see our animals and gardens as well as purchasing Redborne Pork, Lamb and poultry products including bacon and sausages made by the students here on site. We also stock a range of jams, honey, oils and chutneys from local producers.



For more information please contact Mr Williams (stbwilliams@redborne.beds.sch.uk).

Note:

We will be renewing the provision of Adult courses after September. These will either be Sausage making or Smoking and Curing and will give an introduction to each process. Lunch is provided and what ever the course attendees make they get to take away with them. Course notes, tuition, supplies and lunch are all provided for £95. Dates to be confirmed in September and will be detailed on the school website.

Careers Guidance at Redborne Upper School

The school is committed to providing independent, impartial careers information, advice and guidance. We work closely with outside agencies providing support and offering students the opportunity to have one to one careers interviews; attend workshops and careers presentations from training providers, colleges and employers. The school arranges numerous field trips to provide students with as much information as possible to help them when making decisions for their future.

We will be hosting our bi-annual careers fair in February 2016. The purpose of the day is to enable students to meet with representatives from education, employment and training in order to gain advice and information that will support them in making decisions in relation to them planning for their future.

Students are able to book a careers interview by emailing the careers advisor, through their form tutor or via the self referral box in the library.

For more information please contact:

Katrina Armstrong

01525 404462 Ex 2676

stkarmstrong@redborne.com

Lunchtime drop in session 1.10pm to 1.50pm

In school Monday, Tuesday and Wednesday 8.30am to 3pm

Please note that emails may not be answered outside of this time.



Redborne Library

The library is a quiet, calm and relaxed area for the students to work independently during their break, lunchtimes and study periods (Sixth Form). The library is open before and after school. No food and drinks are permitted in the Library; however, there is a book club open to all year groups which runs on a Thursday lunchtime where students are permitted to eat their lunch during this time, the library is closed on that lunchtime. Mobile Phones and Electronic listening devices are not permitted in the library. However, if occasion arises they may be used if permission has been sorted.

General opening times:

Monday to Thursday 8am-4pm

Friday 8am-3.30pm

For more information please contact Mrs Randhawa

(stvrindhawa@redborne.beds.sch.uk) or make a visit to the library.



School Shop

The Redborne School Shop offers an amazing range of goods at very competitive prices including Redborne uniform and school clothing, sportswear, dance tops, stationery and revision books. We sell good quality uniform at fair prices for parents, aiming to make a small profit which is passed straight back to the school – so every item you buy here helps raise funds for Redborne School and is used for the benefit of the students.



Shop Opening Times

Buying from Redborne School Shop is easy. The School Shop is located within the North School grounds and opens five days a week during term-time only between 9am and 2.30pm. You can visit the shop via signing in at North School reception. We accept payment by cash or cheque payable to Redborne School Fund. We are also able to take orders online; students can then collect items during break and lunchtime.

The shop is open for students only at breaktime and lunchtime daily.

If you are new to the school and/or require a large amount of uniform, please make an appointment to visit the shop. Please contact Miss Emma Wood on 01525 842654 (stewood@Redborne.com) to arrange a convenient time.

Second-hand Uniform Shop

The Second-hand Uniform Shop gives you the opportunity to purchase uniform that is in good condition which has either been outgrown or unclaimed from lost property. It is worth a visit as most items are up to 75% off the original price.

Donating unwanted items:

If you have any uniform you no longer require that is in good used condition and you are happy to donate, please hand in cleaned items in a bag to North Reception marked for the attention of the School Shop.

Please note: we will not accept any shoes, boots or trainers.

Connecting Classrooms - South Africa 2015



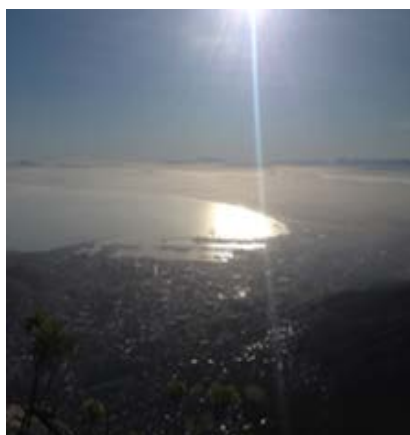
During the final half term of school and once the Year 12 exams were finished, we took a mixture of Redborne and Biddenham Upper school students on a quite remarkable trip to South Africa. Our goal was to teach in three very different schools and experience as much of the culture and sights of South Africa as our energies and bodies could take. The three schools we visited were; Phakama in Cape Town, Beaufort West, and Van Cutsem in De Doorns. All had their own unique environment and spirit.



The schools were full of life and hope. The desire to learn from the students there was tangible and remarkable. Our students were equally wonderful; they ceased to be students and became energetic and passionate teachers themselves.



This was a trip which had been meticulously planned and benefitted from a great sense of balance. Hence we were able to visit many of South Africa's most famous and important landmarks including Robben Island.



It is very hard to do justice to this trip in the space available here, but there is a more comprehensive write up of it from our students on the school website, along with details of other trips.

As a school we are lucky to have so many passionate members of staff who are willing to take time to research, plan and run so many fantastic trips. There will be opportunities in most subjects to go on really worthwhile educational visits which will enrich the students learning and drive their passion onwards. Please ask the trip leader if you have any concerns over costing as there may be some support offered in this regard.

Student / Parent Booklets 2015/16 (to be issued this year)

BOOKLET TITLE	YEAR 9	YEAR 10	YEAR 11	YEAR 12	YEAR 13
New Intake Handbook for Parents, Carers and Students	Pre-admission				
Welcome to Redborne – A guide for students and parents	Pre-admission				
Handbook for Parents, Carers and Students	7 September	7 September	7 September	11 September	7 September
Year 9 Course Descriptors Booklet	11 September				
Sixth Form Curriculum Guide			15 October		
Year 10 Controlled Assessment Booklet		16 October			
Year 11 Controlled Assessment Booklet			23 October		
PEP Booklet 5 – What will I do after my exams?			23 October		
PEP Booklet 3 – How can I help my child to prepare for their GCSEs?			23 October		
School Newsletter	October	October	October	October	October
Progress Check	13 November		23 October		23 October
PEP Booklet 1 – How can I help myself to achieve?	19 November				
Progress Check				27 November	
Student Reports		17 December			
Key Stage 4 Curriculum Booklet	15 January				
Key Stage 4 Consortium Courses	15 January				
Progress Check			22 January		23 October
Higher Education Information Booklet				February	
Higher Education Finance Guide				February	
Student Reports	5 February				
Progress Check		12 February	24 March	5 February	5 February
Exam Information Revision Booklet			24 March		
Student Report					24 March
Examination Arrangements		March/April	March/April	March/April	March/April
Options Confirmation	End April				
PEP Booklet 4 – My exam's tomorrow, what do I do now?			12 April		
Student Reports			19 May		
Progress Check	20 May				
School Newsletter	May	May	May	May	May 2016
PEP Booklet 2 – How and when should I revise?		13 June			
Higher Education UCAS Application Guide (Blue Guide)				June	
Student Report				15 July	
Progress Check	15 July	22 July			
Redborne Musings	Issued every half term				

Proposed Educational Visits 2015/16 (please note that visits will be confirmed nearer the date)

Month	Date	To	Start Time	Finish Time	Year(s)	Places	Subject	Visit	Cost
Sept	09/09/2015		3.15pm	5.00pm	10 & 11	12	Biology	Flitwick Moor	£1
Sept	10/09/2015	15/09/2015	9.00am	3.00pm	13	25	D of E	Gold assessment	TBC
Sept	15/09/2015		11.45am	6.20pm	12 & 13	47	Drama	National Theatre, London	£27
Sept	18/09/2015		9.00am	3.10pm	10	60	Art	Royal Academy of Art	£10
Sept	22/09/2015		8.30am	4.00pm	12 & 13	15	Dance	Performing Arts Conference University of Bedfordshire	free
Sept	23/09/2015		3.15pm	5.00pm	10 & 11	12	Biology	Flitwick Moor	£1
Sept	23/09/2015		9.00am	5.30pm	12 & 13	12	Music	Royal Opera House	£10
Sept	28/09/2015		9.30am	3.00pm	13	15	Biology	Hunterian Museum of Physiology, London	£20
Sept	30/09/2015		3.15pm	5.00pm	10 & 11	12	Biology	Flitwick Moor	£1
Oct	07/10/2015		3.15pm	5.00pm	10 & 11	12	Biology	Flitwick Moor	£1
Oct	07/10/2015		8.00am	6.00pm	9	14	Geography	Derbyshire caves & Dovedale	£16
Oct	14/10/2015		3.15pm	5.00pm	10 & 11	12	Biology	Flitwick Moor	£1
Oct	14/10/2015		8.30am	4.00pm	12	45	Business	Cadbury World	£17
Oct	21/10/2015		3.15pm	5.00pm	10 & 11	12	Biology	Flitwick Moor	£1
Oct	21/10/2015		9.45am	3.00pm	10	45	Business	Woburn Safari Park	£14
Oct	22/10/2015		9.30am	3.00pm	12 & 13	15	Biology	Bedford Hospital Pathology	£5
Nov	08/11/2015	14/11/2015	-	-	9 & 10	24	MFL	German Exchange - Germans in UK	n/a
Nov	10/11/2015		9.00am	5.45pm	10	20	Maths	Institute of Education, University of London	£35
Nov	17/11/2015	20/11/2015	10.00am	6.00pm	12	30	Geography	AS field studies work, Lake District	£190
Nov	18/11/2015		9.00am	3.10pm	11	66	Art	Tate Britain, London	£9
Nov	19/11/2015		9.30pm	3.00pm	12	15	Biology	Natural History Museum, London	£20
Nov	19/11/2015		7.30am	6.00pm	10 & 11	30	Dance	GCSE Dance Student Conference, London	£35
Nov	25/11/2015		9.00am	5.00pm	13	10	Psychology	Friend House, London	£32
Nov	25/11/2015		9.00am	5.45pm	12	20	Maths	Institute of Education, University of London	£42

Proposed Educational Visits 2015/16 (please note that visits will be confirmed nearer the date)

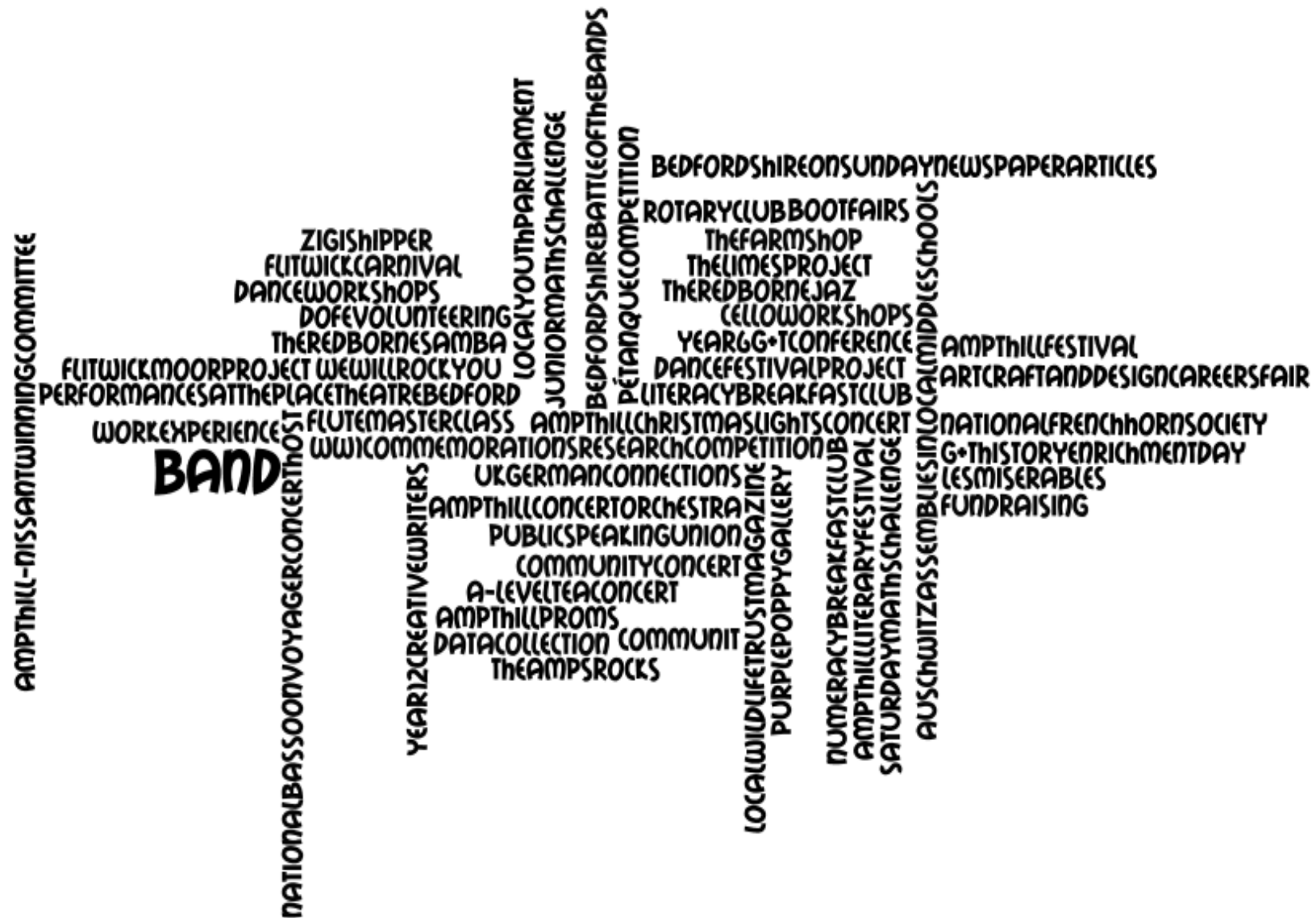
Month	Date	To	Start Time	Finish Time	Year(s)	Places	Subject	Visit	Cost
Dec	01/12/2015		8.30am	6.00pm	13	14	Humanities	Westminster Central Hall	£30
Dec	03/12/2015		9.00am	9.30pm	13	20	Economics	London Docklands Museum, Europe House, Canary Wharf	£20
Dec	08/12/2015		9.00am	3.00pm	13	30	Biology	Whipsnade Zoo	TBC
Dec	11/12/2015		9.30am	2.00pm	13	14	Comms	Milton Keynes Shopping Centre	£2.50
Dec	13/12/2015	16/12/2015	5.30am	1.00pm	10	40	RS	Poland	£440
Dec	17/12/2015		9.30am	3.00pm	12	15	Biology	Natural History Museum, Tring	£10
Jan	29/01/2016		8.30am	5.30pm	9	14	Geography	Cambridge, Scott Polar Res, G&T enrichment	£4
Feb	04/02/2016		8.30am	5.00pm	12	40	Biology	Piccadilly Theatre, London	TBC
Feb	05/02/2016		5.15am	10.30pm	9	45	History	Ypres, Belgium	£75
Feb	22/02/2016		8.30am	3.10pm	12	15	Geography	Luton, AS case study	£4
Feb	23/02/2016		8.30am	3.10pm	12	15	Geography	Luton, AS case study	£4
Feb	25/02/2016		8.30am	4.00pm	13	24	Film Studies	BBFC, London	£15
Feb	26/02/2016		8.30am	5.00pm	10	40	Biology	Dominion Theatre, London	TBC
Mar	02/03/2016		8.30am	3.10pm	10	85	Geography	Bedford, GCSE case study	£8
Mar	03/03/2016		8.30am	3.10pm	10	85	Geography	Bedford, GCSE case study	£8
Mar	04/03/2016		9.30am	4.30pm	12 & 13	20	Psychology	Freud's Museum	£20
Mar	06/03/2016	10/03/2016	tba	tba	9/10/12	20	Spanish	Spanish Exchange/Trip	£530
Mar	07/03/2016		9.00am	5.00pm	12 & 13	30	Biology	Piccadilly Theatre, London	TBC
Mar	11/03/2016	14/03/2016	tbc	tbc	10 to 13	30	Latin	Italy - Herculaneum, Pompeii and Rome	£500
Mar	15/03/2016		9.00am	5.00pm	12	20	Economics	Bank of England, London	£20
Mar	16/03/2016	19/03/2016	5.15am	10.30pm	12	42	History	Berlin, Germany	£520
Mar	17/03/2016		9.00am	4.00pm	12 & 13	30	Science	Piccadilly Theatre, London	£25
Mar	18/03/2016		8.00am	6.00pm	10 & 11	40	Dance	Move It show, London	£30
Mar	21/03/2016		9.00am	4.00pm	12	60	Biology	Whipsnade Zoo	TBC

Proposed Educational Visits 2016 (please note that visits will be confirmed nearer the date)

Month	Date	To	Start Time	Finish Time	Year(s)	Places	Subject	Visit	Cost
Mar	28/03/2016	01/04/2016	tbc	tbc	9 to 11	50	PE	Rotterdam, Holland - Football tour	£560
Apr	16/04/2016	17/04/2016	tbc	tbc	9	36	D of E	Bronze training A	TBC
Apr	30/04/2016	01/05/2016	tbc	tbc	9	36	D of E	Bronze training B	TBC
May	20/05/2016	23/05/2016	tba	tba	10	TBC	D of E	Silver practice (additional)	TBC
Jun	10/06/2016	13/06/2016	tba	tba	10	TBC	D of E	Silver practice	TBC
Jun	17/06/2016	19/06/2016	8.00am	4.30pm	10	28	Geography	Swanage, Dorset	£135
Jun	20/06/2016	21/06/2016	tba	tba	9	TBC	D of E	Bronze assessment A	TBC
Jun	22/06/2016	23/06/2016	tba	tba	9	TBC	D of E	Bronze assessment B	TBC
Jul	01/07/2016	05/07/2016	tbc	tbc	12	TBC	D of E	Gold practice	TBC
Jul	07/07/2016	17/07/2016	tbc	tbc	9 & 10	20	German	Bavaria, Germany. Exchange	£450
Jul	08/07/2016		8.30am	4.00pm	12	40	DT	Business Design Centre, Islington	£25
Jul	11/07/2016	14/07/2016	tba	tba	10	TBC	D of E	Silver assessment (additional)	TBC
Jul	14/07/2016	20/07/2016	4.30pm	10.30am	9 to 13	42	Music	Salzburgerland, Austria. Music tour	£575
Jul	17/07/2016	20/07/2016	7.00am	10.00pm	12	20	Economics	Brussels	£420
Jul	18/07/2016	22/07/2016	tba	tba	10	TBC	D of E	Silver assessment	TBC

Please note that all trips included in this table are subject to confirmation

A flavour of Redborne's involvement in the local community



Redborne Enrichment Summary

	MONDAY	TUESDAY	WEDNESDAY	THURSDAY	FRIDAY
BEFORE SCHOOL	Breakfast Club (invitation only) Library Year 9 (Nov – May HT)	Breakfast Club (invitation only) Library Year 9 (Nov – May HT)	Breakfast Club (invitation only) Library Year 9 (Nov – May HT)	Breakfast Club (invitation only) Library Year 9 (Nov – May HT)	Breakfast Club (invitation only) Library Year 9 (Nov – May HT)
	Clarinet Group Music Dept All year groups				
	Flute Choir Music Dept All year groups				
LUNCH TIME	GCSE/A Level Dance Rehearsals Dance Studio & Hall GCSE/A level students	GCSE/A Level Dance Rehearsals Dance Studio & Hall GCSE/A level students	GCSE/A Level Dance Rehearsals Dance Studio & Hall GCSE/A level students	GCSE/A Level Dance Rehearsals Dance Studio & Hall GCSE/A level students	GCSE/A Level Dance Rehearsals Dance Studio & Hall GCSE/A level students
	Wind Band Music Dept All year groups	Eco Committee Room 65 All year groups	Choir Room 96 All year groups	Book Club Library All year groups	Advanced Strings (invitation only) Music Dept All year groups
		French Listening Room 25 (Week A) Year 11	Christian Union Drama Mobile All year groups	Football Kickabout 3G Pitch Years 12 & 13	Economics Society Room 48 Years 12 & 13

	MONDAY	TUESDAY	WEDNESDAY	THURSDAY	FRIDAY
LUNCH TIME		Robotics Club Room 19 Years 9, 10 & 11	Computer Games 18 Years 10 & 11	Guitar Group Music Dept All year groups	Sixth Form Amnesty International Room 58 Years 12 & 13
		Robotics Club Room 19 Years 9, 10 & 11	Computer Games 18 Years 10 & 11	Guitar Group Music Dept All year groups	Sixth Form Amnesty International Room 58 Years 12 & 13
		Samba Band Music Dept All year groups	Folk Group Music Dept All year groups	Percussion Group Music Dept All year groups	
			Redborne Musings Room 5 (Week B) Years 9, 10 & 11		
FORM TIME	Buddying Various days/locations Years 12 & 13				
	Literacy & Numeracy Support Various days/locations Years 12 & 13				
AFTER SCHOOL	GCSE/A Level Dance Rehearsals Dance Studio & Hall GCSE/A level students	GCSE/A Level Dance Rehearsals Dance Studio & Hall GCSE/A level students	GCSE/A Level Dance Rehearsals Dance Studio & Hall GCSE/A level students	GCSE/A Level Dance Rehearsals Dance Studio & Hall GCSE/A level students	GCSE/A Level Dance Rehearsals Dance Studio & Hall GCSE/A level students

	MONDAY	TUESDAY	WEDNESDAY	THURSDAY	FRIDAY
AFTER SCHOOL	Contemporary Dance Dance Studio & Hall All year groups (Sept-Dec)	Art Club Room 99 Year 9 (Sept-Nov)	GCSE/A Level Ballet Dance Studio & Hall Compulsory - A Level Optional - GCSE (Sept-Mar)	GCSE Recording Sessions Music Dept Year 11	
	Crest (Silver) Room 65 Years 10 & 11	Film Club Connolly Hall Years 9, 10 & 11	“Les Mis” rehearsals Dance Studio/Hall/ Music Rooms All year groups (Sept-Dec)	“Les Mis” rehearsals Dance Studio/Hall/ Music Rooms All year groups (Sept-Dec)	
	Drama Club Drama Studio Year 9	Debate Club Room 77 All year groups	Art Club Art Rooms All year groups (Summer)		
	Jazz Band (invitation only) Music Dept All year groups	Orchestra Music Dept All year groups	Biology Club Room 55 Years 10 & 11 (A, G & T)		
	Learning Support Football 3G All year groups	Redborne Racing DT Block Years 9, 10 & 11	Catering Club Room 91 Year 9 (Sept – May HT)		
	Science Homework Club Room 53 All year groups	Rounders Field (North) Years 9 & 10	Eco Committee Room 65 All year groups		

	MONDAY	TUESDAY	WEDNESDAY	THURSDAY	FRIDAY
AFTER SCHOOL	Essay Writing Drop In Room 51 Sixth Form		Textile Club Room 92 Year 9		
			GCSE/A level Art Club Art Rooms GCSE/A level students		
			GCSE Drama Club Drama Studio Years 10 & 11		
			German Speaking Room 24 Year 11		
			RAW Brass Band Music Department All year groups		
			Studio Nine Design Room 84 Year 9 (Autumn & Spring)		
OTHER SIXTH FORM ACTIVITIES WITH VARYING DAYS AND TIMES (or TBC)	D of E Gold				
	Dance Leaders Award Dance Studio				
	SALSA Learning Support Department				
	Mens Rugby				
	T4T				

Physical Education Autumn Term Extra Curricular Activities

	MONDAY	TUESDAY	WEDNESDAY	THURSDAY	FRIDAY
Lunch time	Sports Hall Basketball <i>Years 10 & 11</i>	Sports Hall Table Tennis <i>All Years</i>	Sports Hall Badminton <i>Years 11 to 13</i>	Sports Hall Badminton <i>Years 9 & 10</i>	Sports Hall Volleyball <i>All Years</i>
					Fitness Suite
After School	3G Boys Football <i>Years 10 & 11</i>	3G Girls Football <i>All Years</i>	3G Boys Football <i>Year 9</i>	3G Mixed Hockey <i>All Years</i>	
	Fitness Suite	Field Boys Rugby <i>All Years</i>	Sports Hall Basketball Games/training	Sports Hall Badminton <i>All Years</i>	
			Fitness Suite	South School Slacklining <i>All Years</i>	
				MUGA (North) Netball <i>All Years</i>	
				Fitness Suite	

The Duke of Edinburgh's Award Scheme

The Duke of Edinburgh's Award Scheme has been running successfully for many decades across the UK and the world.

At Redborne, D of E has been a highly popular and rewarding extra-curricular activity for many years. There are 3 levels to the award, Bronze, Silver and Gold, each bringing a higher level of time and commitment required in order to succeed. Each level has 4 sections - volunteering, skill, physical and the expedition. The Gold level also has a fifth section - the residential.

Level	Year	Staff
Bronze	9	Mr Schmidt
Silver	10	Miss Ives
Gold	12	Miss Caunt

For more information please contact Mr French (stafrench@redborne.beds.sch.uk).





School Musical

Les Misérables



Since March 2015, students from Redborne have been working extremely hard rehearsing for the school musical. This year, the production will be Les Misérables!

Although it has been fully cast, there are still plenty of opportunities to get involved in areas such as backstage, front of house, hospitality, set build, and costume to name a few!

As of September rehearsals will be twice weekly, on a Wednesday and Thursday after school. Performances of Les Misérables will take place on 25th, 26th and 27th November 2015 in the Connolly Hall.

For more information about the School Musical, please contact Mr Trapp (stjtrapp@redborne.beds.sch.uk).



Art Club



Day	Time	Venue
Wednesday	3.15-4.15	Art rooms

Art club is open to all students in Redborne but is primarily attended by students studying art, or those wishing to study the subject at examination level. It only runs in the summer term.

The open door policy at lunchtimes allows students to use the art facilities to develop their own work and this after school club on a Wednesday offers students workshops where they can gain additional guidance.

Art Club (Year 9)



Day	Time	Venue
Tuesday	3.10-4.10	Room 99

Redborne offers an art club specifically for Year 9 students of all abilities. This will only run from September to the first half term of the school year.

Students will be designing props and backdrops to support the school musical.

Art Club (GCSE / A Level)



Day	Time	Venue
Wednesday	3.10-4.30	Art block

This art club runs weekly throughout the whole year and is available to students studying GCSE and A Level Art.

Art facilities and teachers are available every Wednesday after school to support students developing their coursework.

For further information on any of our art clubs please contact Mr Schmidt (stmschmidt@redborne.beds.sch.uk) or Mrs Blackwell (stsblackwell@redborne.beds.sch.uk)



Biology Club

Day	Time	Venue
Wednesday	3.15-4.30	Room 55

Biology club is for students in Years 10 and 11 who are on the Able, Gifted and Talented register, or those that are particularly keen in Biology.

The aim of the club is to promote interest in Biology, and engage students with ideas beyond the syllabus. Please do not hesitate to contact Dr Juty for additional information (stkjuty@redborne.beds.sch.uk).



Book Club

Day	Time	Venue
Thursday	1.10-1.45	Library

All students from all year groups with an interest in reading are welcome to come to Book Club in the library.

During the time when the group meet, students are permitted to eat their lunch, which is the only occasion that food is allowed in the library. Students read books of their choice and the group discuss the books. There is no pressure to read; students can choose to only take part in the discussions.

For more information please contact Mrs Randhawa (stvrindhawa@redborne.beds.sch.uk), or alternatively she can be found in the library.



Breakfast Club

Day	Time	Venue
Every day	8.10-8.35	Library

Breakfast Club is held in the library on a daily basis (Mon-Fri) for targeted Year 9 students, from November to May half term.

Run by selected Year 13 students and supervised by the librarian, the aim of this club is to develop key literacy and numeracy skills through the use of games and other fun activities. Students participate in a different activity each day and have breakfast to set them up for the day ahead.

For more information please contact Mrs Randhawa (stvrindhawa@redborne.beds.sch.uk).



Buddying

Day	Time	Venue
Various	1.50-2.05	Various

This opportunity is for Years 12 and 13 students who wish to help out Year 9 classes during afternoon registration.

For further information please contact Mrs King (stsking@redborne.beds.sch.uk).

Catering Club (Year 9)

Day	Time	Venue
Wednesday	3.15-5.00	Room 91

This club runs from September to May half term and is open to all Year 9 students, regardless of ability.

'The Great Redborne Bake-off' is an opportunity for students with an interest in baking to develop their repertoire of skills and recipes. The complexity of recipes increases through the year and include items such as doughnuts, Battenberg and mini lemon meringue pies.

For more information please contact Miss Ives (stgives@redborne.beds.sch.uk).



Christian Union

Day	Time	Venue
Wednesday	1.10-1.45	Drama mobile

"Talk, eat, laugh and pray". Anyone from any year is invited to come along and in joining this club, students have the chance to meet with other Christians and chat about God.

Martin is our Youth Leader who comes into school to run this club. Please feel free to just come along on a Wednesday lunch time and any extra information can be given then.

Computer Games Club

Day	Time	Venue
Wednesday	1.10-1.45	Room 18

This new extra-curricular activity is aimed at Years 10 and 11 students of all abilities, specifically those interested in computer game development and programming. It will run throughout the year, and gives students the opportunity to create and play computer games, with competitions.

If you are interested in joining Computer Games Club and would like some more information, please contact Mr Brasseaux (stlbrasseaux@redborne.beds.sch.uk).

CREST (Silver)

Day	Time	Venue
Monday	3.20-4.50	Room 65

This club is for students in Years 10 and 11 with an aptitude for science and an ability to make sustained effort in a small group to achieve a common goal.

Students undertake a long project (about 15 months) to gain their Silver CREST award. The project in 2014-15 was to launch a weather balloon high enough to take pictures of the curvature of the earth!

If you are interested in taking part in this extra-curricular activity, please do come along! If you have any questions please do not hesitate to contact Mr Dobson (stdobson@redborne.beds.sch.uk).

Dance - Ballet Club

Day	Time	Venue
Wednesday	3.25-4.25	Dance Studio

Ballet Club is compulsory for A level dance students and optional (although highly advised) for those studying Dance at GCSE level. The weekly class is taught by an external Ballet teacher, Helen Mansell, who focuses on developing and refining the students' technical abilities in preparation for their dance exams. This club runs from September to February half term.

Dance - Contemporary Dance Club

Day	Time	Venue
Monday	3.20-4.00	Dance Studio

Contemporary Dance Club is for all year groups/any students and led by Sixth Form A level dance students. It is an ideal opportunity for year 9 students in particular whom are interested in GCSE Dance and offers a taster in the Contemporary dance style with an insight into the stylistic demands of the GCSE dance course. It also allows students currently studying dance extra opportunities to develop upon their Contemporary dance skills and abilities and inform their current Dance practice. This club only runs in the Autumn term.

For more information about any of the Dance clubs offered at Redborne, please contact Miss Benjamin (stebenjamin@redborne.beds.sch.uk).

Dance Rehearsals (GCSE / A Level)

Day	Time	Venue
Every day	1.10-1.45	Dance Studio & Hall
Every day	3.15-4.15	Dance Studio & Hall

GCSE / A Level Dance Rehearsals Club is for all students studying Dance. It is an opportunity for students to develop and refine their exam pieces, work with their dancers and catch up on any practical tasks missed in lesson. It also allows students extra time to work on their pieces in the examined designated dance space.

For more information about any of the Dance clubs offered at Redborne, please contact Miss Benjamin (stebenjamin@redborne.beds.sch.uk).



Debate Club

Day	Time	Venue
Tuesday	3.15-4.00	Room 77

Everyone is welcome to join Debate Club, especially students who are passionate about arguing and debating their point. This club will be particularly useful to those who are looking to study law. Students have the chance to debate against each other in subjects as diverse as 'should the monarchy be abolished?' to 'should gay marriage have been legalised?'

If you have any queries or would like further information, please contact Ms Brady (stlbrady@redborne.beds.sch.uk).

Drama Club (Year 9)

Day	Time	Venue
Monday	3.20-4.20	Drama Studio

This club is open to Year 9 students of all abilities; no previous experience of drama is necessary. It is a fantastic opportunity for students to practise performance and improvisation skills, work as part of a team, explore creative opportunities and develop self-confidence.

For more details please do not hesitate to contact Mrs Francis (sttfrancis@redborne.beds.sch.uk).

Drama Club (GCSE)

Day	Time	Venue
Wednesday	3.10-4.10	Drama Studio

If you are in Years 10 or 11 and study GCSE Drama then you may be interested in this club. It is an after school club for the above students who would like the opportunity to get involved in even more directing, creating and performing. This is fun but can also develop the skills needed to succeed in the course.

Please contact Miss Turner (steturner@redborne.beds.sch.uk) for further details.

ECO Committee

Day	Time	Venue
Tuesday	1.10-1.45	Room 65
Wednesday	3.15-4.15	Room 65

ECO committee is aimed at students from all year groups, including Sixth Form, who are prepared to be the change they want to see in the world!

Students on the committee work together with the rest of the student body as well as staff to raise awareness of environmental issues affecting the school.



Recent activities have included working with the Governors to promote solar energy (the new hall will have a 6 kW solar array on its roof!), the annual photographic calendar competition, and an off-beat poster campaign to tackle littering. For more information please contact Mr Dobson (stdobson@redborne.beds.sch.uk).

Economics Society

Day	Time	Venue
Friday	1.10-1.45	Room 48

Redborne Economics Society is a group of students who organise and participate in a variety of subject-related extra-curricular activities such as debates, lectures, visits and competitions. Typical activities would include discussing current issues like migration, EU membership and Corbynomics, participating in inter-school competitions like the Bank of England's Target 2.0 Challenge or visiting lectures at the London School of Economics.

Open to any Sixth Form student with an interest in economics! For further information about this club, please contact Mrs Jones (stsjones@redborne.beds.sch.uk).

Essay Writing Drop In Session

Day	Time	Venue
Monday	3.15-4.00	Room 51

This drop in session is for Sixth Form students. For further information please contact Miss Gant (sthgant@redborne.beds.sch.uk).

Film Club

Day	Time	Venue
Tuesday	3.30-6.00	Connolly Hall

The film club is a great opportunity for students to experience a range of films that they may never have heard of but will certainly enjoy. It is open to Years 11, 12 and 13. For further information please contact Mr Burton (stdburton@redborne.beds.sch.uk).

French Listening Club

Day	Time	Venue
Tuesday	1.10-1.40	Room 25

The French listening club is for Year 11 students studying French. For further information please contact Mrs Shaw (stpshaw@redborne.beds.sch.uk).

German Speaking Club

Day	Time	Venue
Monday - Week A (Years 10 & 11)	3.15-4.00	Room 23
Wednesday (Year 13)	3.15-4.00	Room 23
Thursday (Year 12)	3.15-4.00	Room 24

There is a fortnightly German Grammar Masterclass on Monday (Week A) for Years 10 and 11 students. The German speaking club for Year 13 is with Frau Neale and the Year 12 speaking practice is with Frau Gilpin. For further information please contact Mrs Neale (strneale@redborne.beds.sch.uk).

Football Kickabout

Day	Time	Venue
Thursday	1.15-1.45	3G Pitch

This club is for students in the Sixth Form to have a fun kick around with peers. For further information please contact Mr Atkins (stnatkins@redborne.beds.sch.uk).



Learning Support Football

Day	Time	Venue
Monday	3.20-4.20	3G Pitch

This club is primarily for students from any year group in Learning Support, however friends of these students are also welcome.

Learning Support students can come and have a kick about and enjoy themselves. We sometimes do games like cross bar challenge, but most often have a game depending on numbers that turn up. For more information please contact Mr Willis (stnwillis@redborne.beds.sch.uk).



Literacy and Numeracy Support

Day	Time	Venue
TBC	1.50-2.05	Various

This extra-curricular activity runs weekly and is for Sixth Form students. It entails students attending one Year 9 afternoon registration to support students as they complete literacy and numeracy tasks. For additional information please contact Mr Knightley (stiknightley@redborne.beds.sch.uk).

Music

There are a large number of extra-curricular activities in the Music Department on offer for students at Redborne:

Day	Before School 8.15-8.35am	Lunch time 1.15-1.45pm	After School
Monday	Flute Choir <i>Mrs Naylor</i> Clarinet Group <i>Mr Price</i>	Wind Band <i>Mr Price</i>	Jazz Band (until 4.30pm) <i>Mr Bottone</i>
Tuesday		Samba Band <i>Mr Baker</i>	Orchestra (until 4.15pm) <i>Mr Bottone</i> String Orchestra (until 4.50pm) <i>Mrs Perry</i>
Wednesday		Folk Group <i>Mrs Perry</i> Choir <i>Mr Baker</i>	French Horn Group (until 3.50pm) <i>Mr Locke</i> RAW Brass Band (4.00-4.30pm) <i>Mr Halliday</i>
Thursday		Percussion Group <i>Mr Howard</i> Guitar Group <i>Mr Earley</i>	GCSE Recording Sessions <i>Mr Bottone / Mr Price</i>
Friday		Advanced Strings <i>Student led</i>	

For further information about any of our Music Groups, please do not hesitate to contact Mr Bottone (stbbottone@redborne.beds.sch.uk), or visit the Music Department.

Netball

Day	Time	Venue
Thursday	3.15-4.15	MUGA

Netball Club is open to all year groups and all abilities. Students don't have to want to play for the school to attend.

By joining Netball, students have the chance to play the game and refine some skills. It is also a fun way to improve fitness and can be used as D of E activity. Selected students will represent the school in fixtures which will take place on a Tuesday.

For more information please contact Mrs Jones (stmariejones@redborne.beds.sch.uk).

Psychology Drop In

Day	Time	Venue
Thursday	3.20-3.50	Library

This club is run for Sixth Formers studying Psychology who would like some extra support, more time to work in a quiet environment, or their questions answered.

For more information please do not hesitate to contact Mrs Kenny (stmkenney@redborne.beds.sch.uk).

Redborne Musings

Day	Time	Venue
Wednesday (Week B)	1.15-1.45	Room 5

Redborne Musings is the school's newspaper run by students catering to a wide range of interests. The paper does not report on school events, but rather on world events in a style suited to student readers.

This club is aimed towards students in Years 9, 10 and 11 of any ability. In particular students should be keen writers, or be interested in art or graphic design. It is important to note that this club runs once a fortnight.

For more information please contact Miss Clark (stfclark@redborne.beds.sch.uk).

Redborne Racing

Day	Time	Venue
Tuesday	3.15-4.30	DT block

This club is designed for students aspiring for a career in engineering, in Years 9, 10 or 11. Students who participate in this club will design, build and race an electric vehicle against over 300 schools nationally. Redborne Racing covers all aspects of STEM whilst in a format which the students can see their work come together in the form of an electric race car, competing in a series of 90 minute endurance races.

If you are interested in becoming part of Redborne Racing or for more details, please contact Mr Brooks (stkbrooks@redborne.beds.sch.uk).



Robotics Club

Day	Time	Venue
Tuesday	1.10-1.45	Room 19

If you are interested in Robotics and programming, and are in Years 9, 10 and 11, then you might be interested in Robotics Club! All abilities are welcome.

The club only started running in the summer term of last year, and students are able to build, program and complete various challenges with micro robots.

For more information please contact Mrs Williams (stmwilliams@redborne.beds.sch.uk). Posters can also be found around the school.

Rounders

Day	Time	Venue
Tuesday	3.15-4.15	Field (North)

Rounders is open to Years 9 and 10 of all abilities. Students don't have to want to play for the school to attend.

By joining Rounders, students have the chance to play the game and refine some skills. It is also a fun way to improve fitness, and can be used as D of E activity. Selected students will represent the school in fixtures which will take place on a Thursday.

For more information please contact Mrs Jones (stmariejones@redborne.beds.sch.uk).

Students As Learning Support Assistants (SALSA)

Day	Time	Venue
Various	Any	LS Department

This club is for Years 12 and 13 students who are interested in helping other students in the school with learning disabilities during their free periods.

For additional information please contact Miss Ellis (stmellis@redborne.beds.sch.uk).

Science Homework Club

Day	Time	Venue
Monday	3.15-5.00	Room 53

This club will be running for the first time this year and is aimed at disadvantaged students from any year group.

It is a chance for pupils to catch up on homework in a productive environment led by teachers and enthusiastic Sixth Formers. Pupils can use this as an opportunity to do homework, catch up on missed lessons, or get some one-to-one tutoring.

If you have any questions about Science Homework Club, please do not hesitate to contact Miss Calloway (stocalloway@Redborne.beds.sch.uk).

Sixth Form Amnesty International

Day	Time	Venue
Friday	1.10-1.45	Room 58

For more details please contact Ms Eldridge (stkeldridge@redborne.beds.sch.uk).

STEM Club

Day	Time	Venue
Monday	3.20-4.50	Room 65

STEM club is aimed at Year 9 students with a keen interest in science who can work well in small groups. In this club students undertake a variety of short projects over the year exploring aspects of science, technology, engineering and maths. These projects include rocketry and DNA testing. For more information please contact Mr Dobson (stdobson@redborne.beds.sch.uk).

Studio Nine Design

Day	Time	Venue
Wednesday	3.15-4.00	Room 84

This extra-curricular activity will only run in the first two terms of the school year (Autumn and Spring). It's aimed at Year 9 students with a keen interest in Graphics and product design. Studio Nine Design is a club which will design solutions to interesting problems and enter competitions. For more information please contact Mrs Wakeling (stcwakeling@redborne.beds.sch.uk).

Teachers For Tomorrow (T4T)

Day	Time	Venue
Various	Various	Various

This club is ideal for Sixth Form students that are aspiring teachers. For more information please contact Ms Eldridge (stkeldridge@redborne.beds.sch.uk).

Textile Club (Year 9)

Day	Time	Venue
Wednesday	3.15-4.15	Room 92

Textile club will give students the opportunity to explore a wide range of technique and choose their own projects. Last year included decorative collars and sublimation printed pencil cases. We will begin the year by making costumes for the school musical Les Miserable. Years 12 and 13 students also attend the club to give support to the Year 9 students. All abilities and those with a particular interest in Textiles are welcome. For more information please contact Ms Dun (stadun@redborne.beds.sch.uk)



**Enrichment can help you to
maximise your time at
Redborne.....**

**So take part and get
involved!**